

# Threat Assessment Group



---

SAN DIEGO COUNTY SHERIFF'S DEPARTMENT

# TAG Personnel

- Assigned Sergeant
- 4 TAG Detectives
- 1 Protest/Labor Union Detective
- 1 Analyst

# Some of what we do

- Investigation, protection, investigative support and prosecution of threat related cases to Sheriff's employees (and their families) and work-related threats to San Diego County employees.
- Threats to Public and Elected Officials within Sheriff's Jurisdiction.
- Threat assessments and Dignitary Protection as assigned.
- Intelligence gathering, monitoring and surveillance of protests/labor disputes.
- Sensitive/confidential investigations as assigned.

# Policy and Procedure 3.25

## **3.25 THREATS OF PHYSICAL HARM TO EMPLOYEES AND ELECTED OR PUBLIC OFFICIALS**

Any information of a serious threat of physical harm, against any Sheriff's employee or family member, shall immediately be reported to the employee and the threatened employee's supervisor. Notification shall be initiated by any Sheriff's employee who becomes aware of the threat. Threats of a serious nature against any Sheriff's employee or family member will be investigated with earnest and will not be disposed without a thorough investigation.

The employee's supervisor will promptly confer with the threatened employee and take appropriate action in an attempt to ensure the employee and the employee's family member's immediate safety. The employee's supervisor shall initiate immediate verbal notification, via the chain of command, to his/her appropriate Assistant Sheriff for proper notification. In addition, the employee's supervisor shall immediately verbally report the threat to the Threat Assessment Group (TAG) Sergeant.

The employee's supervisor will ensure that the threat is properly documented in NetRMS. The special studies field located in NetRMS for "Employee Threatened" will be appropriately marked for statistical purposes. The primary investigation of the threat will be handled by the Threat Assessment Group.

## Who must report it?

- Any Sheriff's Dept Employee:
- Any information of serious threats of physical harm to any San Diego Sheriff's Department employee and/or their family
- SHALL report the threat to the threatened employee and the employee's supervisor

## Reminder for Field Supervisors

- Point new supervisors to P&P 3.25
- Notification of employee and command up the chain to A/S
- Threats to family members of Sheriff's Employees are included

## Supervisor Responsibilities

- Confer with employee and take appropriate action in an attempt to ensure the immediate safety of the employee and/or family member.
- Call local SDCS Station or local PD?
- Arrest Suspect?
- Escort for employee?
- Obtain EPO, TRO and/or GVRO?
- Bulletins, ONS entries and/or Premise History entry?

## Supervisor Responsibilities

- If threat occurs in SDSD jurisdiction, ensure report is created in NetRMS.
- Ensure “Special Studies” tab and “Employee Threatened” is completed.
- Notify the TAG Sergeant and forward the case to them and other jurisdictions as necessary.



## TAG Sergeant's Responsibilities

- Handle on-call duties and be a liaison for department and county personnel and outside agencies.
- Assist supervisors with the investigation process.
- Coordinate and oversee intra-department information and resource sharing as well as inter-agency.
- Determine if and how events will be investigated by detectives.

## TAG's Responsibilities

- TAG Detective:
- Investigate/document case thoroughly
- Conduct a Threat Assessment
- Determine investigative plan (i.e., tracking, monitoring, surveillance)
- Work with other SDSO units and/or outside agencies to gather intel
- Present case to DA
- Assist stations, facilities and courts
- Provide victim with Protecting Personal Information (PII) removal assistance

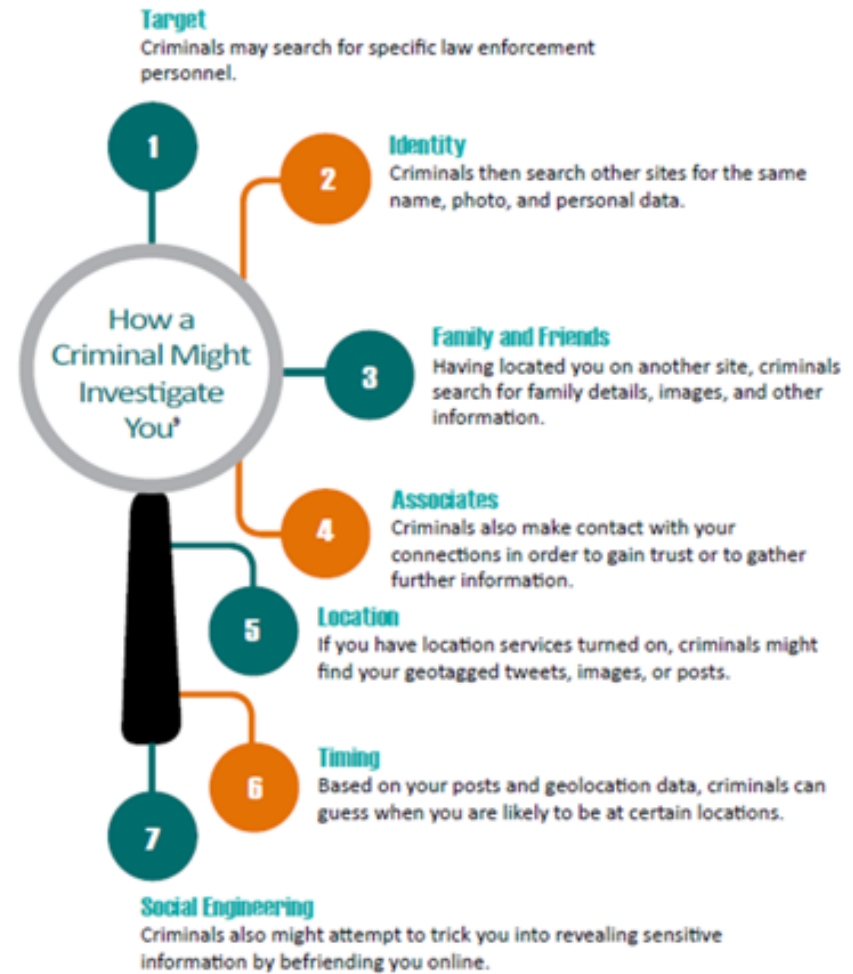
# PROTECTING PERSONAL INFORMATION

TAG has developed a system to assist deputies involved in an OIS, controversial use-of-force, or other concerning situations.

The system provides step-by-step means of removing personal information from online and securing social media.

- Personal information of OIS-involved deputies is often removed for them.

Doxing is a trending concern for law enforcement personnel.



## TAG's Responsibilities

- TAG Analyst:
- Conduct a comprehensive threat assessment on a suspect or group
- Tracking, monitoring, and information sharing with other local agencies
- Historical and intelligence gathering and monitoring of planned and unplanned protests and demonstrations in the county

# TAG Dignitary Protection

- Sheriff and designated command staff, as well as County Board of Supervisors
- Plain clothes for public events
- If applicable, coordinate with SED, EPD, VS and affected patrol stations and courts
- Liaison with other agencies for dignitary protection including:
  - USSS
  - DA's Office
  - County Counsel
  - Other State/Federal partners
  - Other local LE agencies

# TAG's Support

- TAG can provide analytical, undercover, and surveillance assistance to track/monitor suspects in threat/stalking cases and harassment cases.
- Event and/or Threat Assessments
- Threat investigations NOT handled by TAG:
  - Threat cases not related to county employment
  - Other agencies cases
  - Judicial Threats\*
  - School Threats\*

# TAG Cases

- Roughly 20,000 county employees
  - This includes every other county department including:
    - Cases reported by County HR
    - Cases reported directly by employee
    - Cases reported by other agencies
    - Threats found through other sources

# TAG Cases

2021

2022

