

Rock Mountain Detention Facility

Management Update June 2023



Anti-ligature Update



Bunks

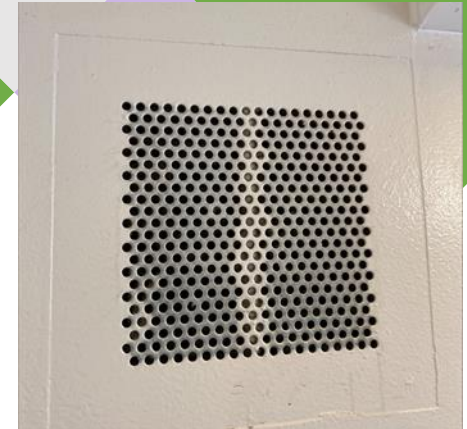
Bubblers

Grills

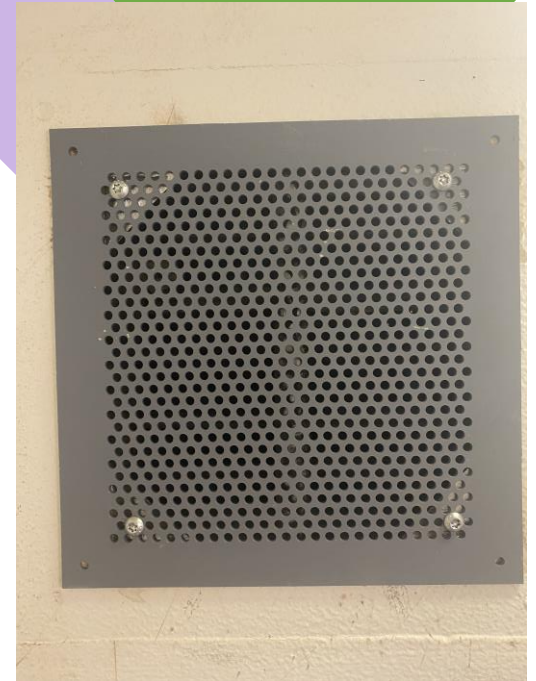
**Holding
Cells**

Showers

Housing Cells PRE-INSPECTION



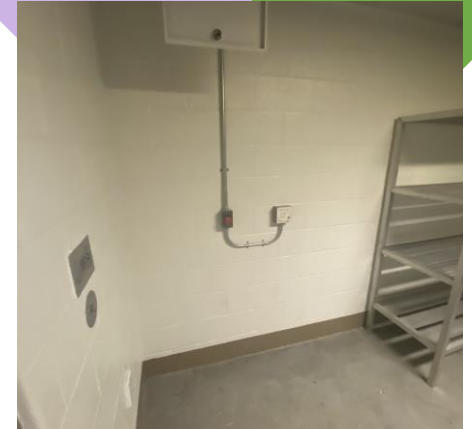
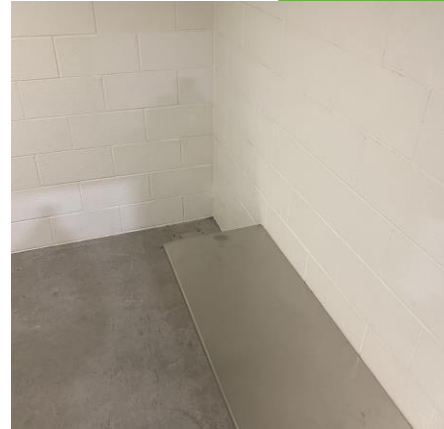
Progress



Shower Progress

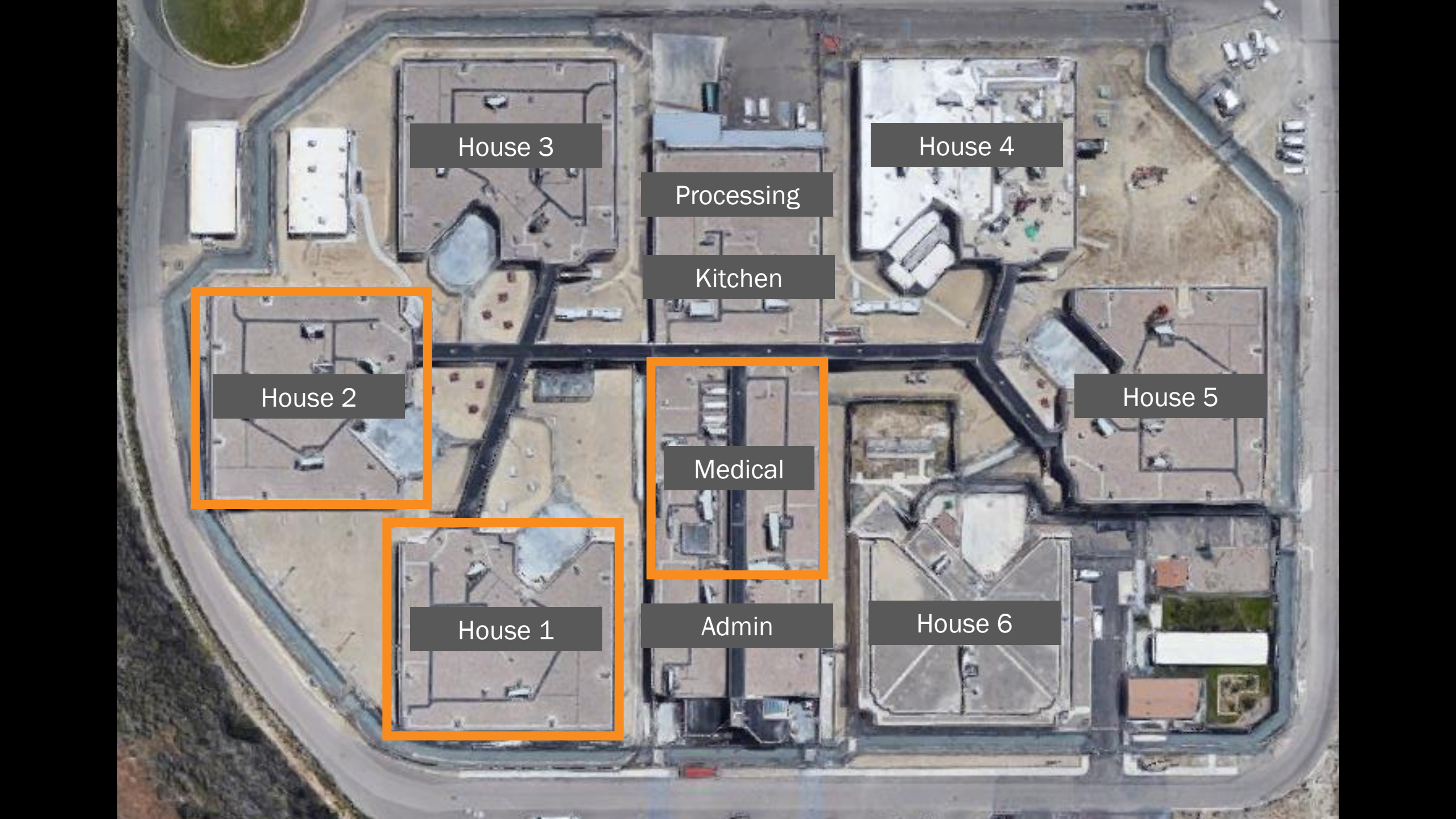


Holding Cell Progress





2023



House 3

House 4

Processing

Kitchen

House 2

House 5

Medical

House 1

Admin

House 6

Completed Renovations





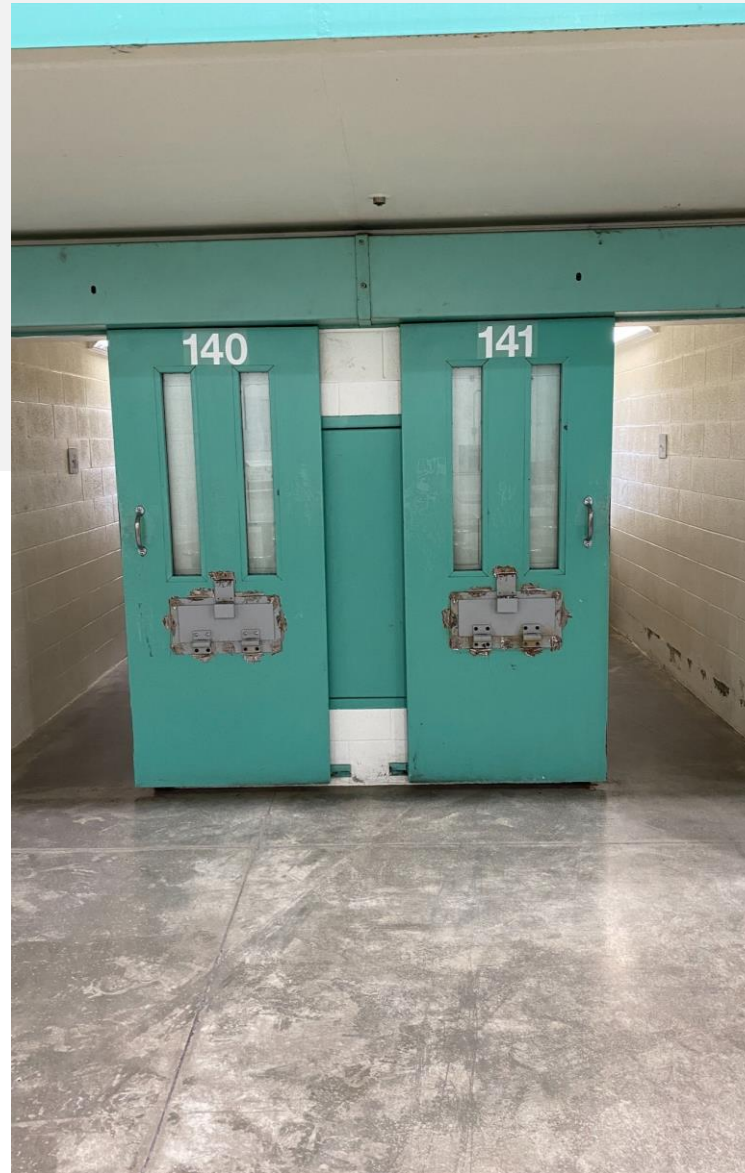
Completed Renovations





House 6 (Formally Fac. 8)

- Cuffing Ports installed
- Lock delivery/installation TBD
- Paint



TITLE 24 MINIMUM STANDARDS FOR LOCAL DETENTION FACILITIES

Part One, Administrative Regulations for the Board of State and Community
Corrections, Chapter 13, Article I, Section 13-102

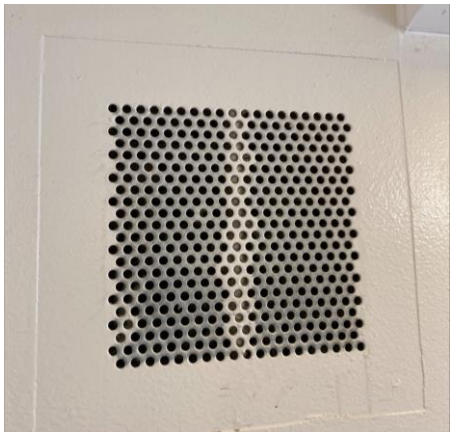
and

Part Two, Section 1231, Minimum Standards for Adult Detention Facilities

*Changes shown in Strikeout and Underline
become effective January 1, 2020*



BSCC PRE-INSPECTION



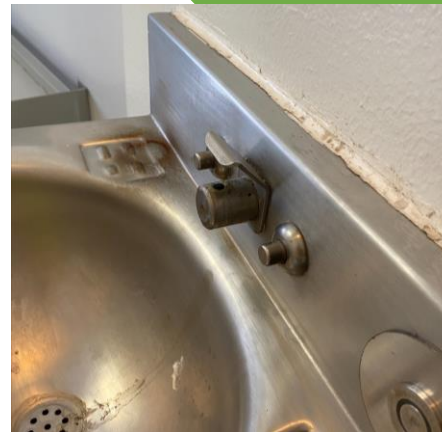
Air Return Vents

Supply and return grilles shall have openings no greater than 3/16 inch



Air Vents

Supply and return grilles shall have openings no greater than 3/16 inch



Fountain Bubblers

The drinking fountain bubbler shall be without curved projections



Stand Alone Sinks

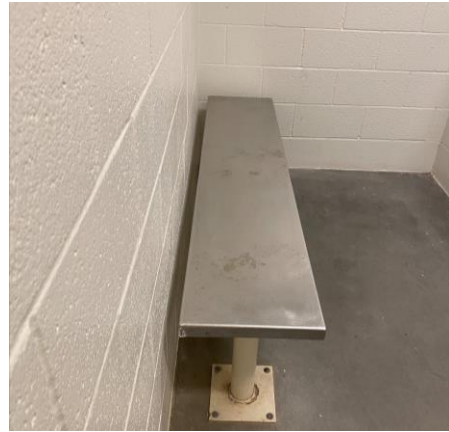
All sinks (if not combo unit) must be modified to prevent ligature points

BSCC PRE-INSPECTION



Recreation Yard

All outdoor recreation space must have a clear 15 ft height



Benches

All benches must be measured for rated usable space for temporary holding and be mounted next to wall



Visit Phones

Telephone cords shall be at a length that reduces the potential for use as a ligature



Visit Counter

Inmate visiting counter is supported by brackets that present ligature concerns and should be removed

Dayroom Enclosure

REMOVED



BSCC PRE-INSPECTION

1231(2)(H) Suicide Hazards

“The facility design shall avoid any surfaces, edges, fixtures or fittings that can provide an attachment for self inflicted injury.”

1231.3.5 Beds

Beds, desk surfaces, and shelves shall have no sharp edges and be configured to prevent attachment.

1231.3.3 Drinking Fountains

Operation of control valves shall use flush buttons or similar. The drinking fountain bubbler shall be without curved projections.

1231.3.6 Light Fixtures

Light fixtures must be of secure designs

1231(2)(H) Telephone Cords

Telephone cords shall be at a length that reduces the potential for use as a ligature.

1231.2.10 Exercise Area

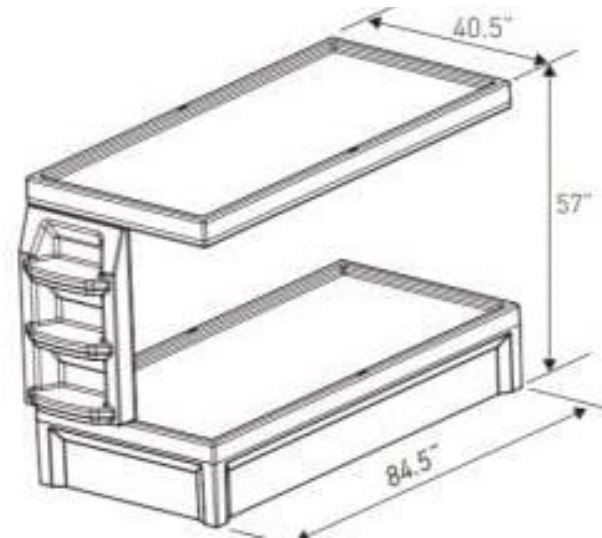
The minimum clear height must be 15 feet.

1231.3.10 Seating

In temporary holding and temporary staging cells, seating must be securely fixed to the floor and/or wall. When bench seating is used, eighteen inches of bench is seating for one person.

Mock-Up

- DGS will retrofit/replace required items in cell
- Determine cost estimate to complete each housing unit
- Seek BSCC approval to proceed with the proposed changes
- Expedite renovations for Houses 1, 2, and Medical
- Continue project renovating Houses 3-6



What's New?

Retrofit/Replace

- Bunks
- Sinks
- Air Vents
- Visit Phones

Opening

- House 1
- House 2**

Remove

- Water Fountain Bubblers
- ~~House 7 Enclosure~~
- Suicide Hazards

Complete

- House 6 (Grandfathered)

What's Next?

Retrofit/Replace

- Bunks
- Sinks
- Air Vents
- Visit Phones

Open

- House 1
- House 2

Remove

- Water Fountain Bubblers
- ~~House 7 Enclosure~~
- Suicide Hazards

Complete

- House 6 (Grandfathered)

What's Next?

- RMDF will open 1 housing unit in July
- Future:

Sworn Line Staffing

- 124 sworn staff
- 16 TAD Deputies from GBDF (soft opening)
- 8 Sergeants

Professional Staffing

- 67 professional staff
 - -Medical (53)
 - -Inmate Processing (7)
 - -Food Services (7)

The Effect on Detention Services Bureau

George Bailey Detention Facility to be renovated/upgraded

Process to take two years with closing one house at a time at GBDF

Vista Detention Facility to be renovated
renovated/upgraded

Questions?