

# Rock Mountain Detention Facility

Project Update



# Agenda

---

01. History

---

02. Construction and  
Renovation

---

03. Title 24  
Compliance

---

04. What's next

---

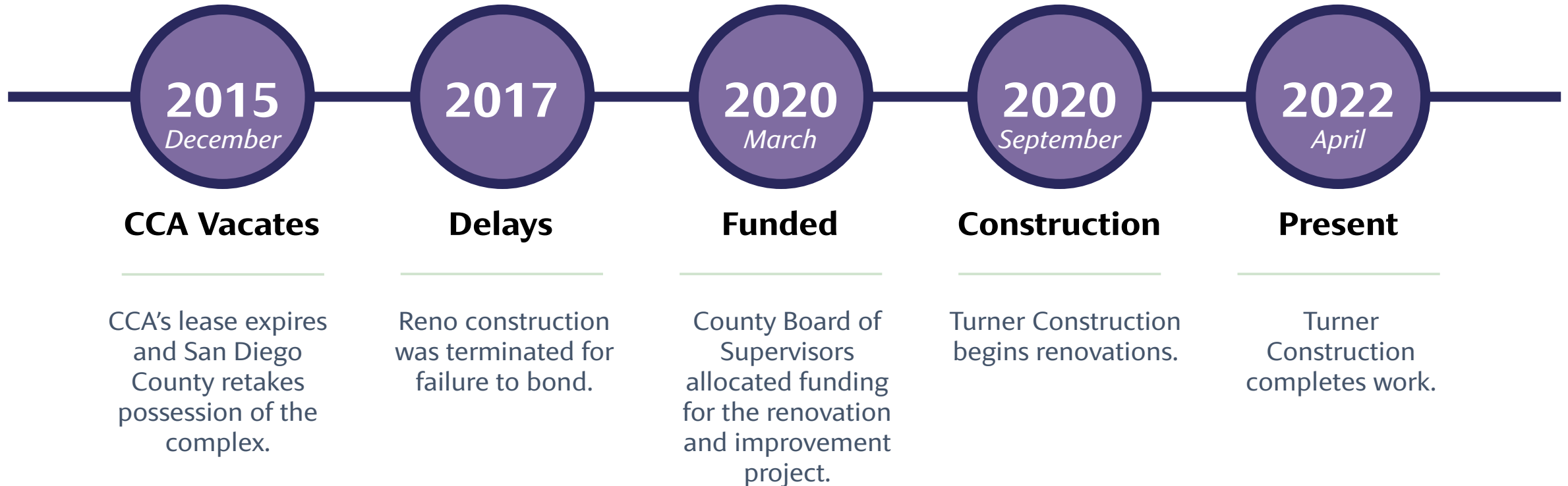
05. Closing

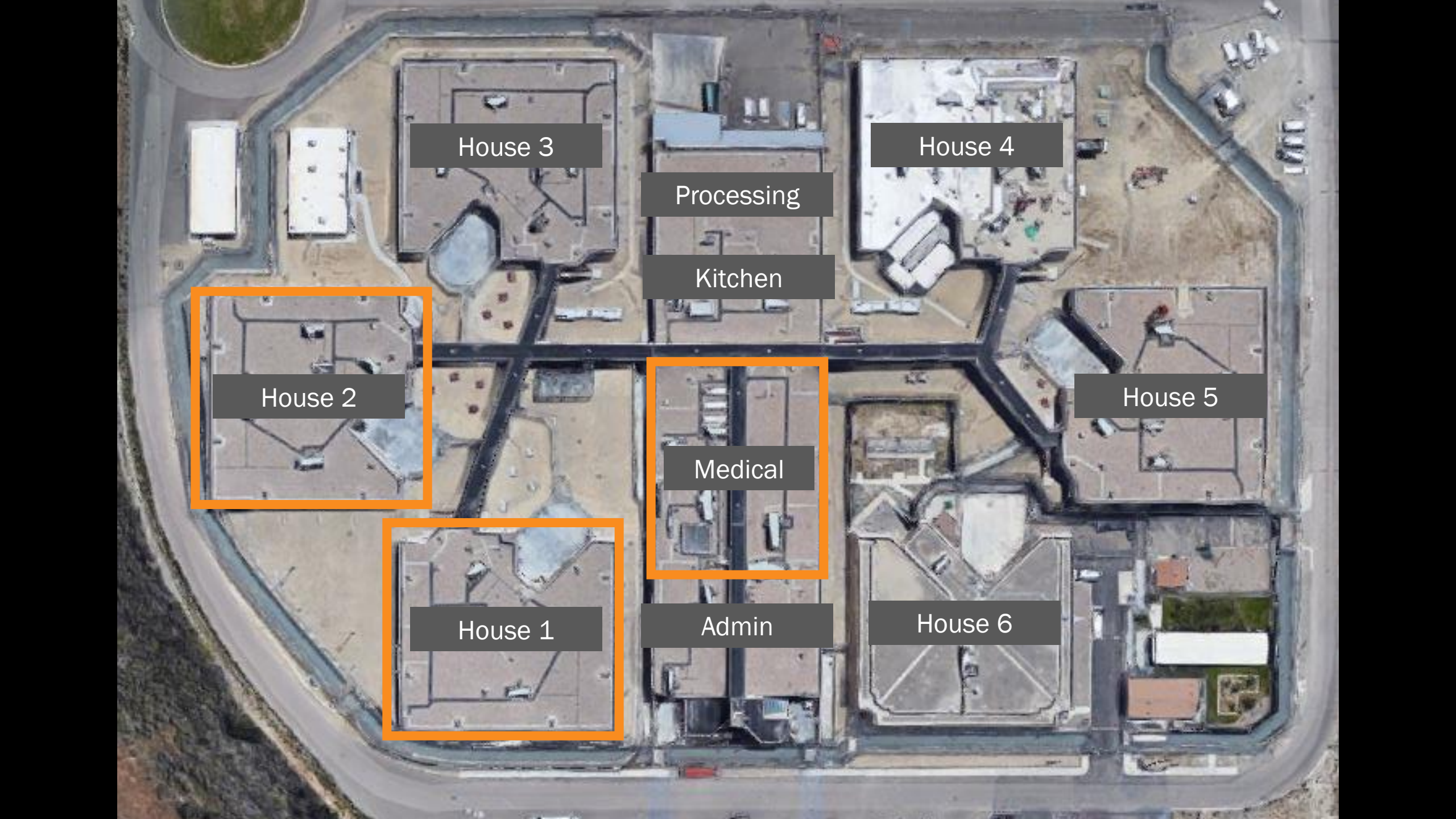


# Rock Mountain Detention Facility



## Timeline





House 3

House 4

Processing

Kitchen

House 2

House 5

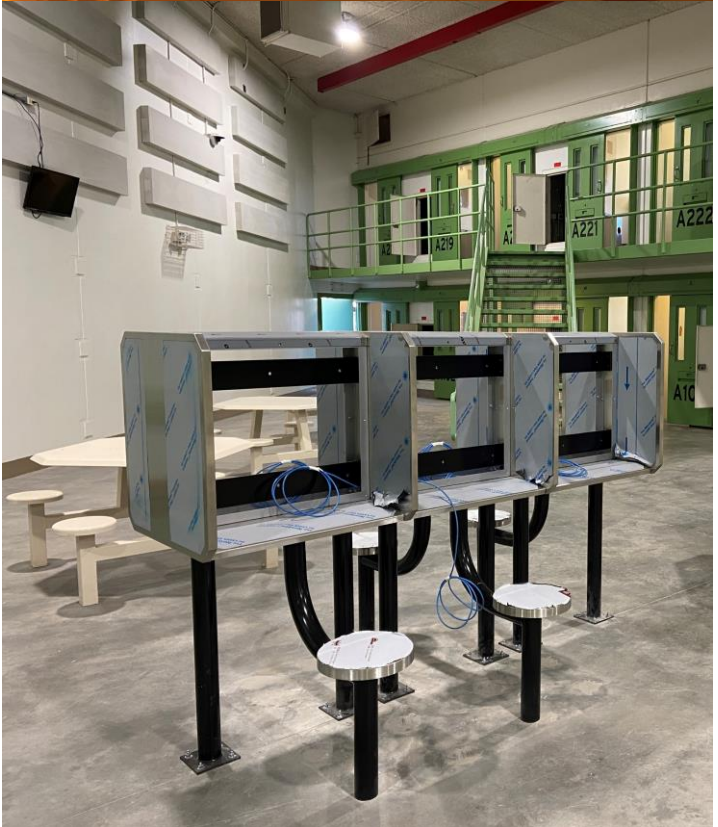
Medical

House 1

Admin

House 6

# Completed Renovations





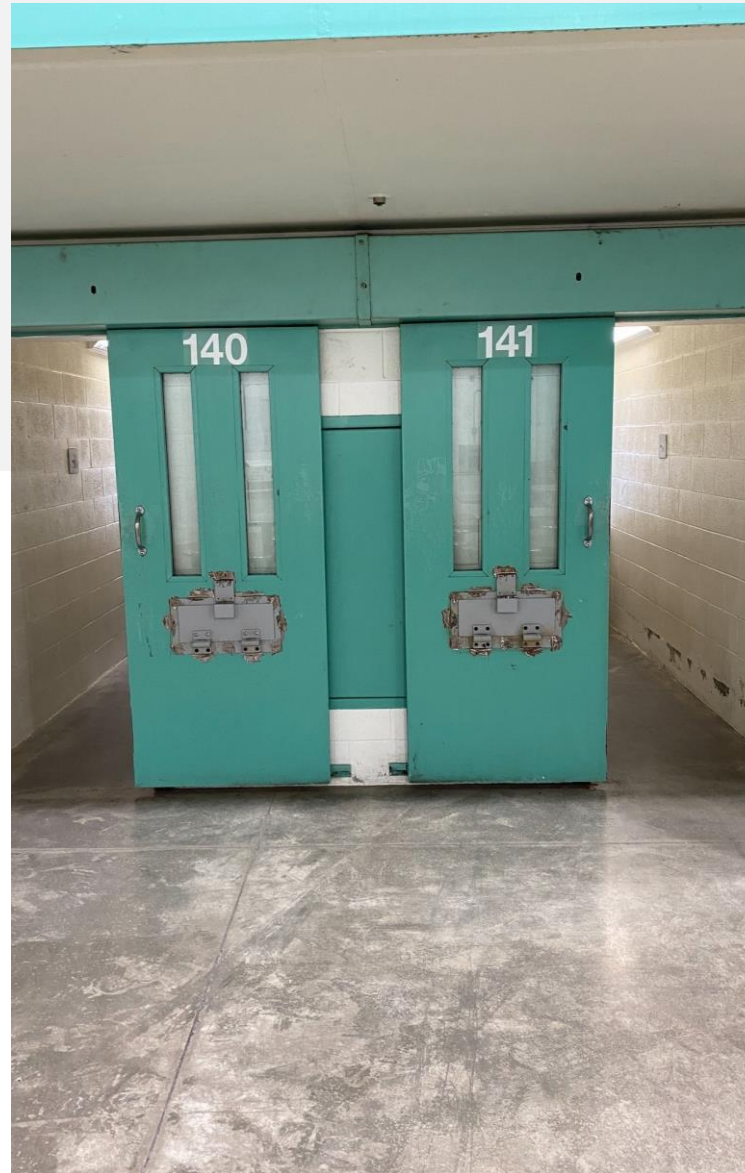
# Completed Renovations





# House 6 (Formally Fac. 8)

- Cuffing Ports installed
- Lock delivery/installation TBD
- Paint





# TITLE 24 MINIMUM STANDARDS FOR LOCAL DETENTION FACILITIES

Part One, Administrative Regulations for the Board of State and Community  
Corrections, Chapter 13, Article I, Section 13-102

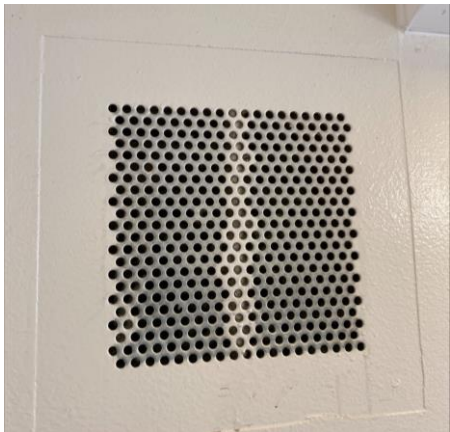
and

Part Two, Section 1231, Minimum Standards for Adult Detention Facilities

*Changes shown in Strikeout and Underline*  
*become effective January 1, 2020*



# BSCC PRE-INSPECTION



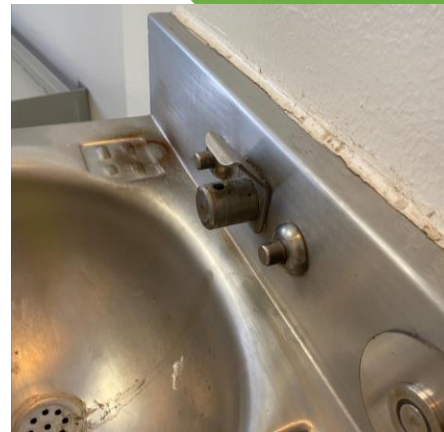
## **Air Return Vents**

Supply and return grilles shall have openings no greater than 3/16 inch



## **Air Vents**

Supply and return grilles shall have openings no greater than 3/16 inch



## **Fountain Bubblers**

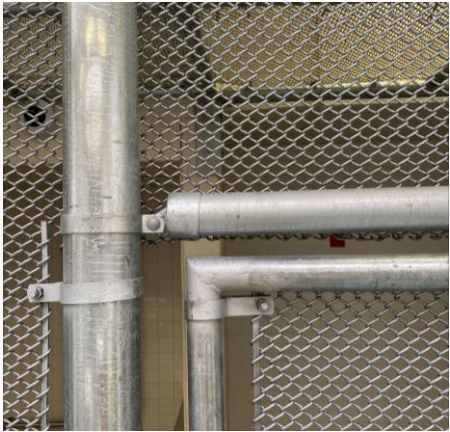
The drinking fountain bubbler shall be without curved projections



## **Stand Alone Sinks**

All sinks (if not combo unit) must be modified to prevent ligature points

# BSCC PRE-INSPECTION



**Enclosure Gaps**



**Desks**



**Bunk Steps**



**Bunk/Wall Gap**

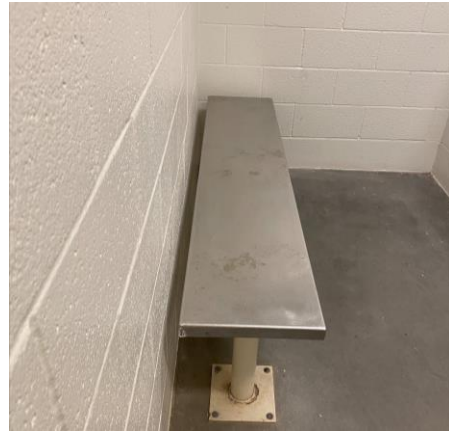
Beds, desk surfaces and shelves shall have no sharp edges and be configured to prevent attachment

# BSCC PRE-INSPECTION



**Recreation Yard**

All outdoor recreation space must have a clear 15 ft height



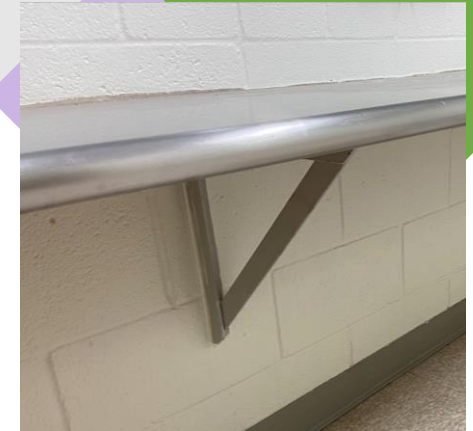
**Benches**

All benches must be measured for rated usable space for temporary holding and be mounted next to wall



**Visit Phones**

Telephone cords shall be at a length that reduces the potential for use as a ligature



**Visit Counter**

Inmate visiting counter is supported by brackets that present ligature concerns and should be removed

# Dayroom Enclosure

## REMOVED



# BSCC PRE-INSPECTION

---

## **1231(2)(H) Suicide Hazards**

“The facility design shall avoid any surfaces, edges, fixtures or fittings that can provide an attachment for self inflicted injury.”

## **1231.3.5 Beds**

Beds, desk surfaces, and shelves shall have no sharp edges and be configured to prevent attachment.

## **1231.3.3 Drinking Fountains**

Operation of control valves shall use flush buttons or similar. The drinking fountain bubbler shall be without curved projections.

## **1231.3.6 Light Fixtures**

Light fixtures must be of secure designs

## **1231(2)(H) Telephone Cords**

Telephone cords shall be at a length that reduces the potential for use as a ligature.

## **1231.2.10 Exercise Area**

The minimum clear height must be 15 feet.

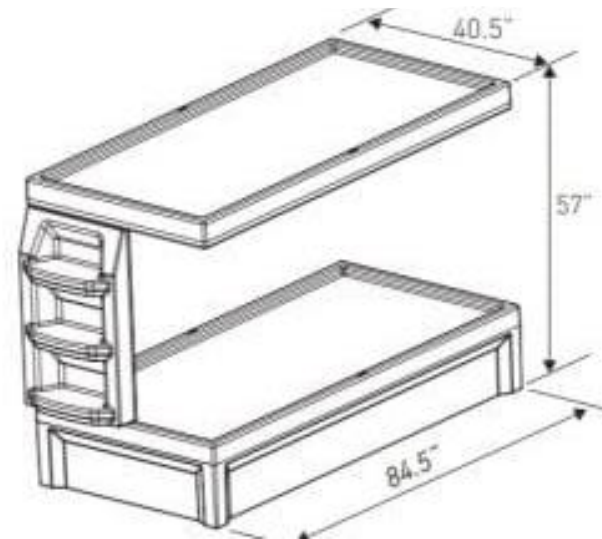
## **1231.3.10 Seating**

In temporary holding and temporary staging cells, seating must be securely fixed to the floor and/or wall. When bench seating is used, eighteen inches of bench is seating for one person.

# Mock-Up

---

- DGS will retrofit/replace required items in cell
- Determine cost estimate to complete each housing unit
- Seek BSCC approval to proceed with the proposed changes
- Expedite renovations for Houses 1, 2, and Medical
- Continue project renovating Houses 3-6



# What's Next?

## Retrofit/Replace

- Bunks
- Sinks
- Air Vents
- Visit Phones

## Open

- House 1
- House 2
- House 3
- Medical

## Remove

- Water Fountain Bubblers
- ~~House 7 Enclosure~~
- Suicide Hazards

## Complete

- House 6 (Grandfathered)



# What's Next?

- RMDF will open 3 housing units with 191 staff members

## Sworn Line Staffing

- 124 sworn staff
- 16 TAD Deputies from GBDF (soft opening)
- 8 Sergeants

## Professional Staffing

- 67 professional staff
  - -Medical (53)
  - -Inmate Processing (7)
  - -Food Services (7)

## Sworn Administrative Staffing

- Lieutenant
- 1 Sergeant
- 2 Deputies

# The Effect on Detention Services Bureau

George Bailey Detention Facility to be renovated/upgraded

Process to take two years with closing one house at a time at GBDF

Vista Detention Facility to be renovated  
renovated/upgraded

**Questions?**