



1

---

---

---

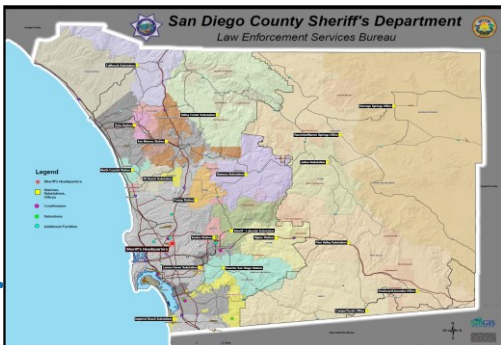
---

---

---

---

---



2

---

---

---

---

---

---

---

---

### COMMUNITY OUTREACH



- DIVERSITY - We embrace the strength in the diversity of our employees and our communities.
- Through Community Outreach, we make available a multitude of programs and initiatives to the community that will provide resources for residents of San Diego County.
- Our mission is to be a conduit to pass information between the Department and the public. We also endeavor to develop and maintain relationships through open and candid dialogue with a variety of community-based organizations and members.

3

---

---

---

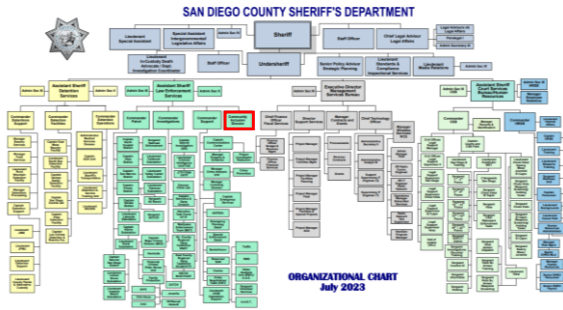
---

---

---

---

---




---

---

---

---

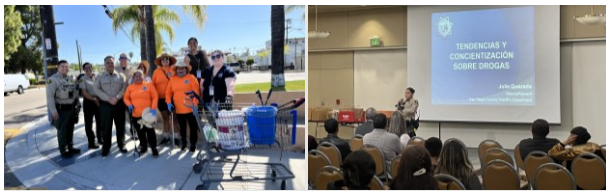
---

---

---

---

4



**Community Inclusion Director Role Established in 2019**

Bridge the gap between deputies and faith-based communities, youth, local community-based organizations, immigrant and refugee community members, social justice advocates, the LGBTQ+ community, and persons with disabilities.

---

---

---

---

---

---

---

---

5

**Community Connections**

Made in collaboration with each Patrol Station, Crime Prevention Specialists, COPPS, Volunteer Services, Recruiting Unit, Media Team and more!



The San Diego County Sheriff's Crime Prevention Unit strives to reduce crime and improve quality of life in partnership with the communities we serve.

---

---

---

---

---

---

---

---

6

### Community Projects

- Sheriff's Spanish Academy/Academia del Alguacil
- Faith & Blue Campaign (October)
- Tacos with the Community (Hispanic Heritage Month)
- IRC VESL Classes (Monthly Virtual Presentations)



7

---

---

---

---

---

---

---

---

---

---

### Community Projects



8

---

---

---

---

---

---

---

---

---

---

### External Impact

www.SDSheriff.gov:

- Customer Service Survey
- Speaker's Bureau
- Open Data



9

---

---

---

---

---

---

---

---

---

---

**Formulating Policy and Trainings**

- Understanding Bias and Cultural Awareness
- LGBTQ+ Procedures for Deputies
- Law Enforcement Guide to Jewish and Muslim Community
- Domestic Violence (Spanish video with English subtitles)
- Afghan Training video for deputies  
\*video is in-progress
- Diversity & Inclusion Committee (D&I)



Sheriff's Department LGBTQ Advisory Council  
-2 Dept. liaisons and 15 Community Members

10

10

---

---

---

---

---

---

---

---

---

---

**Local and Countywide Efforts**



**"Different city, different focus"**

- East County  
-Refugees/Newcomers
- North County  
-Hispanic community, Farmworkers
- South County  
-Smaller areas, individual needs
- Regional  
LGBTQ, Interfaith, Intellectual & Developmental Disability Groups

11

11

---

---

---

---

---

---

---

---

---

---

**Bringing the unity in community**

- Opportunity to demystify
- Relationship Building
- Bridging Communication



12

12

---

---

---

---

---

---

---

---

---

---



13

---

---

---

---

---

---

---

---