



Community Engagement

---

Sheriff's Department

Edith Sanchez Cruz, Community Inclusion Director

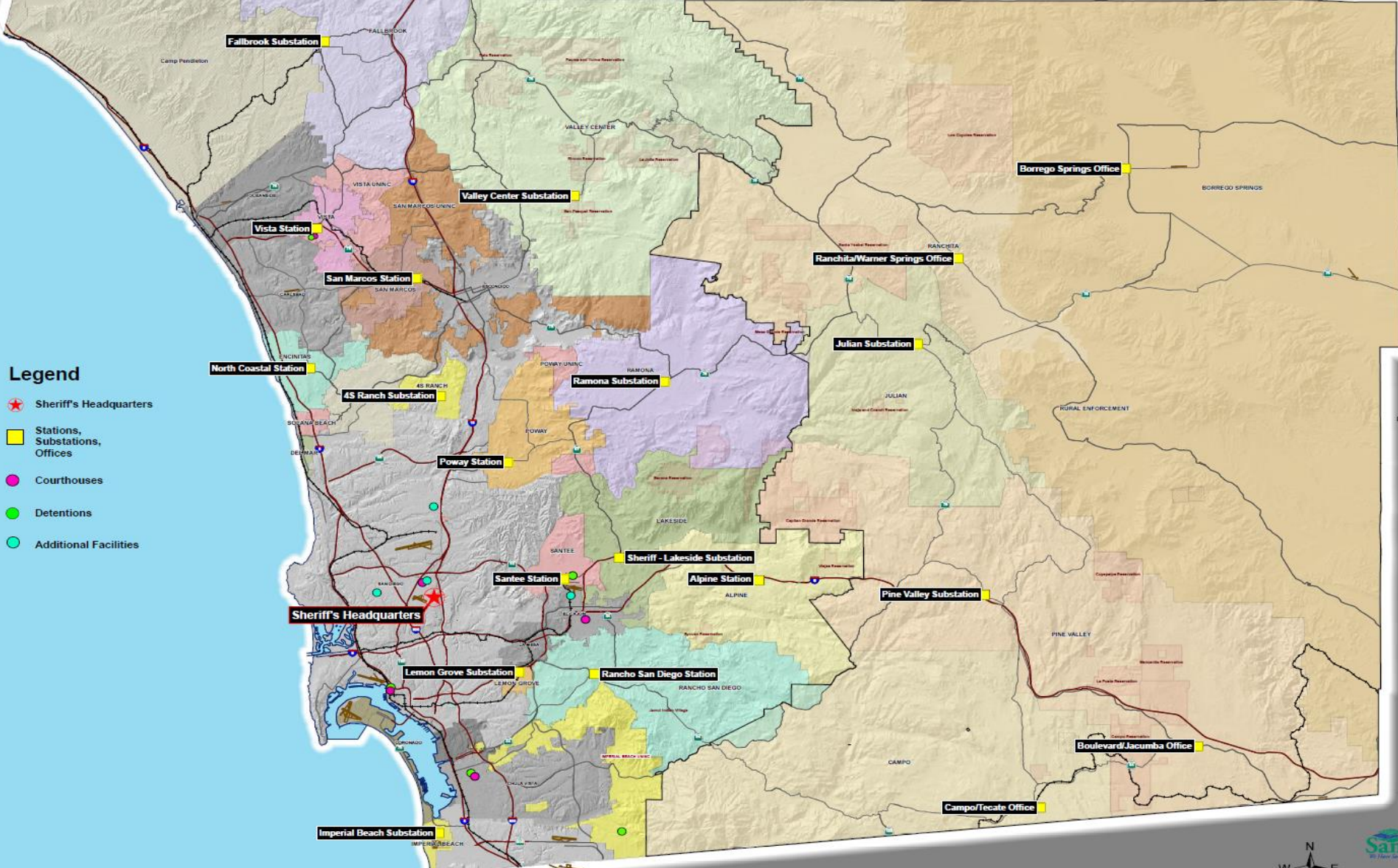


# San Diego County Sheriff's Department

## Law Enforcement Services Bureau



Orange County



### Legend

- Sheriff's Headquarters
- Stations, Substations, Offices
- Courthouses
- Detentions
- Additional Facilities

Imperial County

Baja California, Mexico





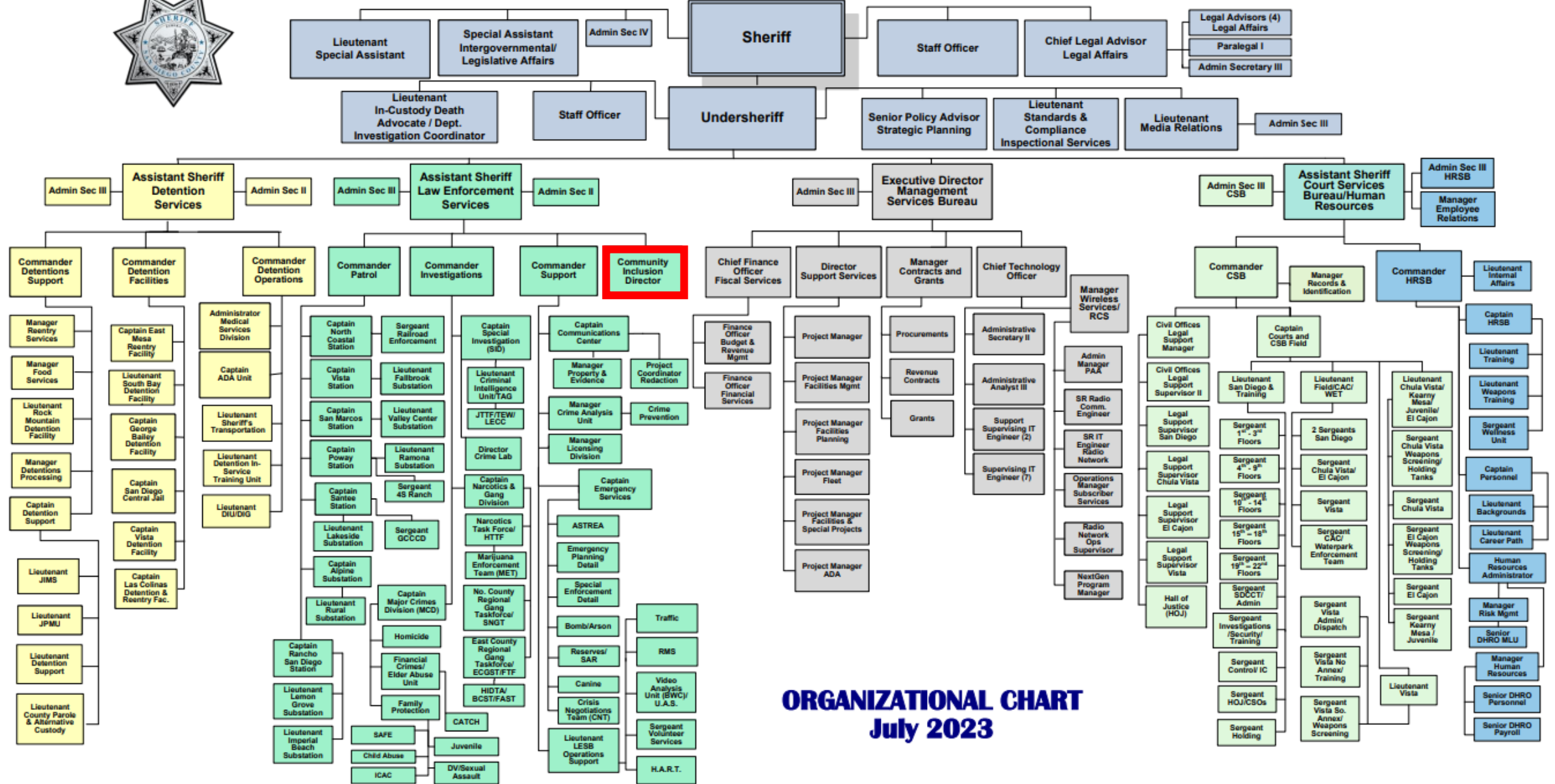


# COMMUNITY OUTREACH

- DIVERSITY- We embrace the strength in the diversity of our employees and our communities.
- Through Community Outreach, we make available a multitude of programs and initiatives to the community that will provide resources for residents of San Diego County.
- Our mission is to be a conduit to pass information between the Department and the public. We also endeavor to develop and maintain relationships through open and candid dialogue with a variety of community-based organizations and members.



# SAN DIEGO COUNTY SHERIFF'S DEPARTMENT



**ORGANIZATIONAL CHART**  
July 2023





## Community Inclusion Director Role Established in 2019

Bridge the gap between deputies and faith-based communities, youth, local community-based organizations, immigrant and refugee community members, social justice advocates, the LGBTQ+ community, and persons with disabilities.



# Community Connections

Made in collaboration with each Patrol Station, Crime Prevention Specialists, COPPS, Volunteer Services, Recruiting Unit, Media Team and more!



The San Diego County Sheriff's Crime Prevention Unit strives to reduce crime and improve quality of life in partnership with the communities we serve.



# Community Projects

- Sheriff's Spanish Academy/Academia del Alguacil
- Faith & Blue Campaign (October)
- Tacos with the Community (Hispanic Heritage Month)
- IRC VESL Classes (Monthly Virtual Presentations)





# Community Projects



National Forensic Science Week Event @Sheriff's Dept. Regional Crime Lab 9.23.23

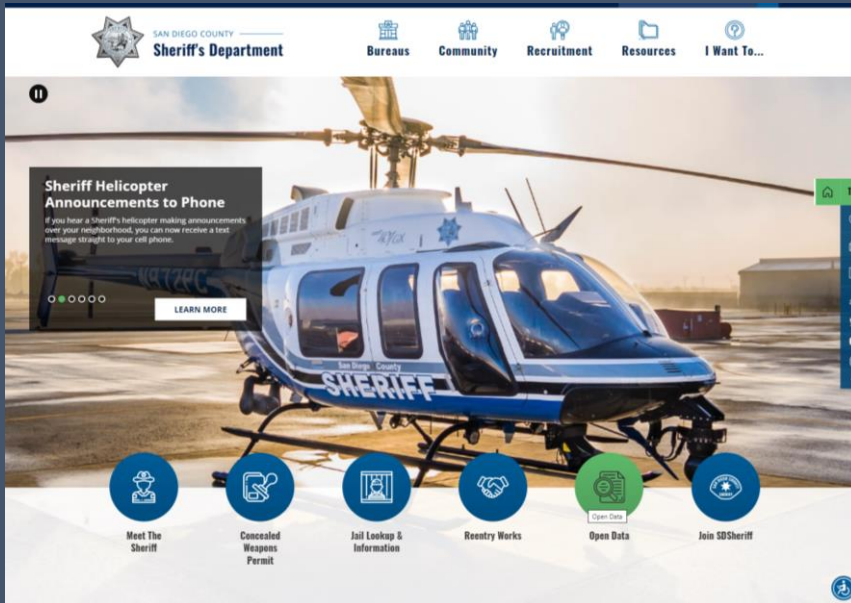
SAN DIEGO COUNTY  
**BLUE ENVELOPE**  
PROGRAM



# External Impact

www.SDSheriff.gov:

- Customer Service Survey
- Speaker's Bureau
- Open Data



# Formulating Policy and Trainings

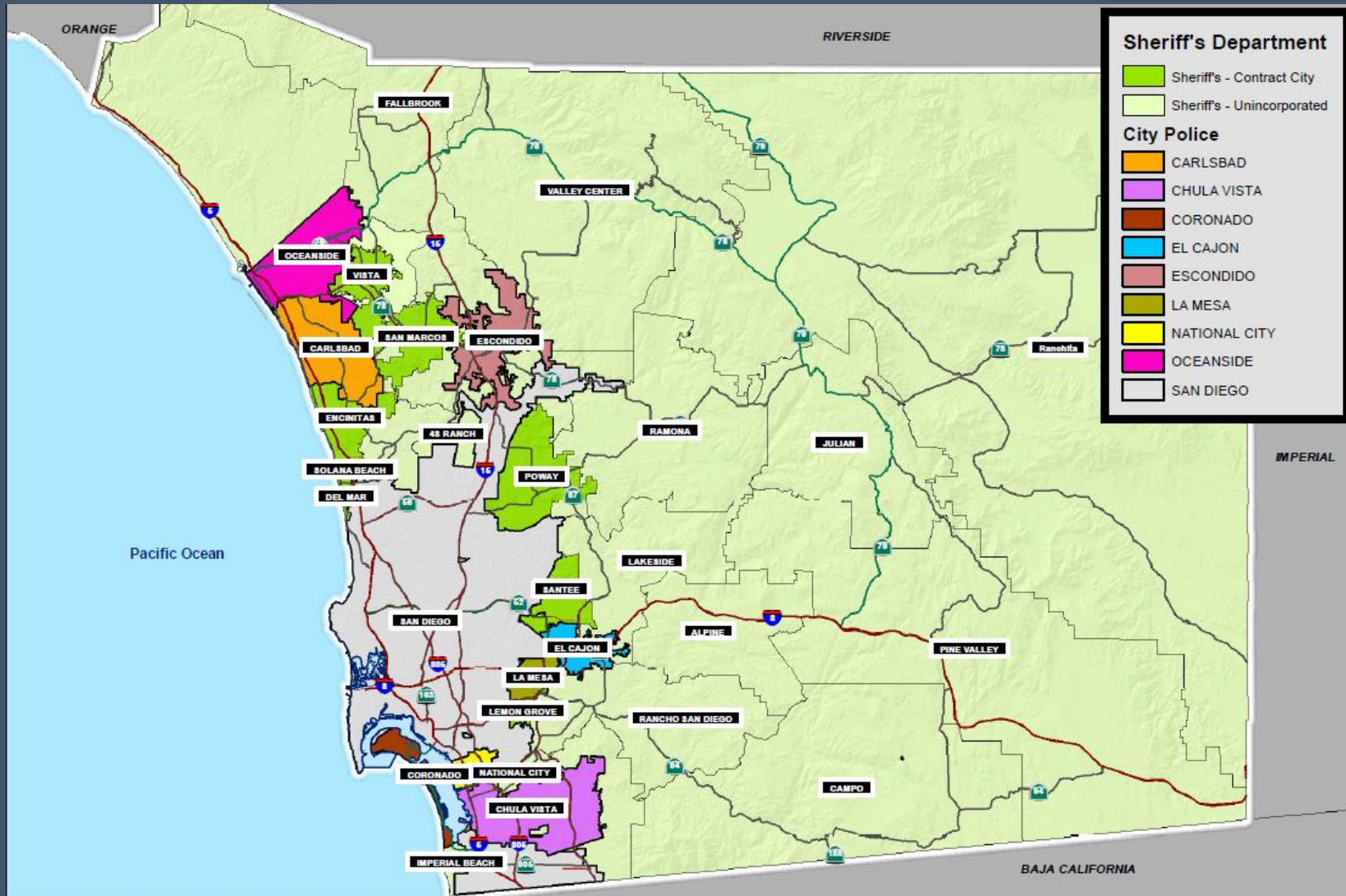
- Understanding Bias and Cultural Awareness
- LGBTQ+ Procedures for Deputies
- Law Enforcement Guide to Jewish and Muslim Community
- [Domestic Violence](#) (Spanish video with English subtitles)
- Afghan Training video for deputies  
*\*video is in-progress*
- Diversity & Inclusion Committee (D&I)



Sheriff's Department LGBTQ Advisory Council  
-2 Dept. liaisons and 15 Community Members



# Local and Countywide Efforts



“Different city, different focus”

## East County

-Refugees/Newcomers

## North County

-Hispanic community,  
Farmworkers

## South County

-Smaller areas, individual needs

## Regional

LGBTQ, Interfaith, Intellectual &  
Developmental Disability  
Groups

# Bringing the unity in commUNITY

- Opportunity to demystify
- Relationship Building
- Bridging Communication





The background features a close-up, slightly blurred image of a sheriff's badge. The badge is circular with a central emblem and text around the perimeter. A semi-transparent blue rectangular box is overlaid in the center of the image, containing the word "QUESTIONS?".

**QUESTIONS?**