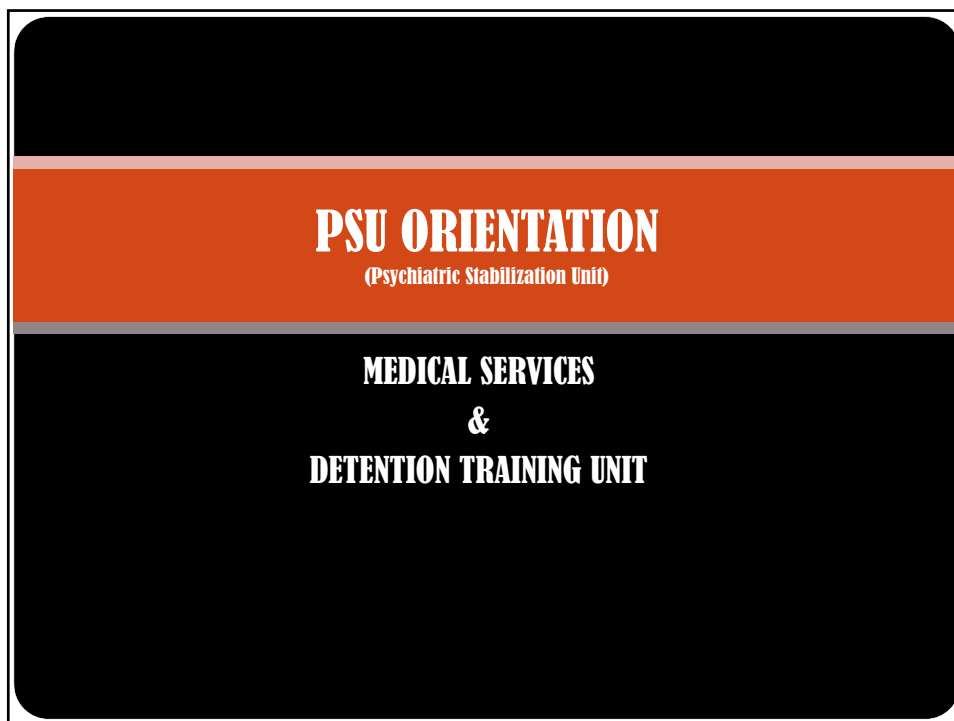


Course Title:		PSU Orientation			
Certification:		STC #06666106			
Certification Date:		07/10/19			
Expiration Date:		07/10/21			
Review Date:		05/01/20			
Time Block	Estimated Time	Learning Objective	Topic	Brief Overview of Topic/Instruction	Instructor
0700-0705	5	Introduction to the Course	Why Are We Here?	Give a brief intro to the course, and instructor introductions.	LeAndra Holland/ Cpl. Christensen
0705-0745	40	Gain an understanding of what the PSU is and who can be placed into PSU.	Learn about LPS Facilities, Voluntary/Involuntary admissions, legal codes, Patient Advocacy, and "competency".	Define what an LPS facility is and why it's important for deputies to know. Discuss the differences between voluntary and involuntary admissions. Review the most utilized legal codes associated with the PSU and how they apply. Discuss what the Patient Advocacy Group is and what "competency" means for inmates in the PSU.	LeAndra Holland/ Cpl. Christensen
0745-0755	10	BREAK			
0755-0830	35	Review the policies written in regards to the PSU and JBCT/Step Down Units.	Department Policy and Procedure / Facility Green Sheets for LCDRF & SDCJ	Review policy and procedure for unit operations, security measures, meal times, proper identification, bedding/clothing, use of restraints, suicide attempts, and releases. Discuss what the JBCT / Step Down units are and how they operate.	LeAndra Holland / Cpl. Christensen
					All Instructors

1.50 HOURS



PSU ORIENTATION
(Psychiatric Stabilization Unit)

**MEDICAL SERVICES
&
DETENTION TRAINING UNIT**

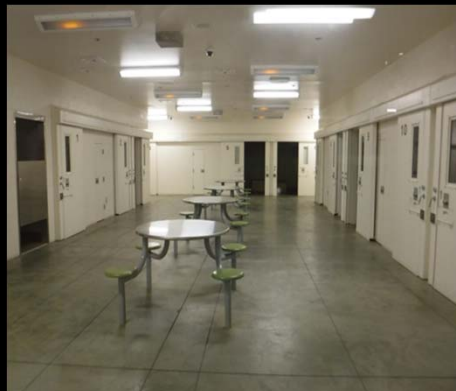


GOALS

1. Demonstrate the knowledge of what an LPS facility is, voluntary vs. involuntary admissions, and legal codes associated with the PSU.
2. Gain a basic understanding of what the Patient Advocacy Group is and its importance to the patients in PSU.
3. Discuss what "competency" means in regards to the inmates in our custody.
4. Review our department's policy and associated green sheets.
- 5.

LPS (Lanterman-Petris-Short)

A facility that offers 24 hour voluntary and involuntary mental health treatment. Our PSU facilities are LPS licensed acute care units.



Patient Advocacy Group

LETS TALK
**PATIENT
ADVOCACY**



KINESE
YOUR SURGICAL CONCERN

Voluntary vs. Involuntary Admissions

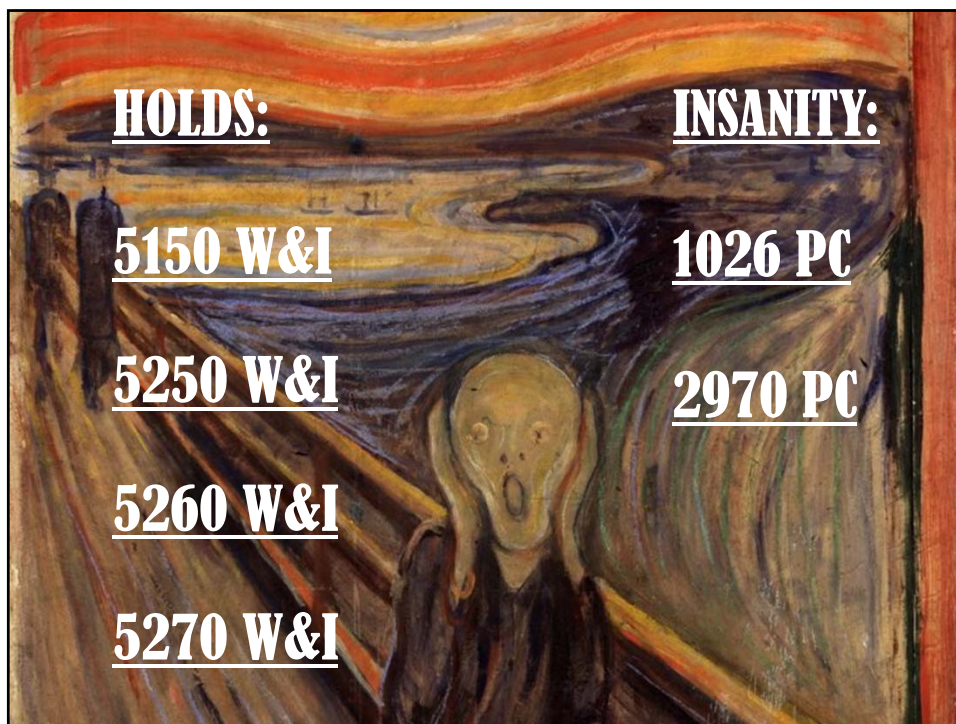
VOLUNTARY

- The inmate has to be willing and able to accept voluntary treatment
- Can leave the unit if he/she chooses

INVOLUNTARY

- The inmate meets “Short-Doyle” criteria for care
- Civil commitments
- Probable cause hearings
- Penal commitments
- Recommended by a judge independent of penal or WI code

PENAL CODES & WELFARE AND INSTITUTIONS CODES



HOLDS:

5150 W&I

5250 W&I

5260 W&I

5270 W&I


INSANITY:

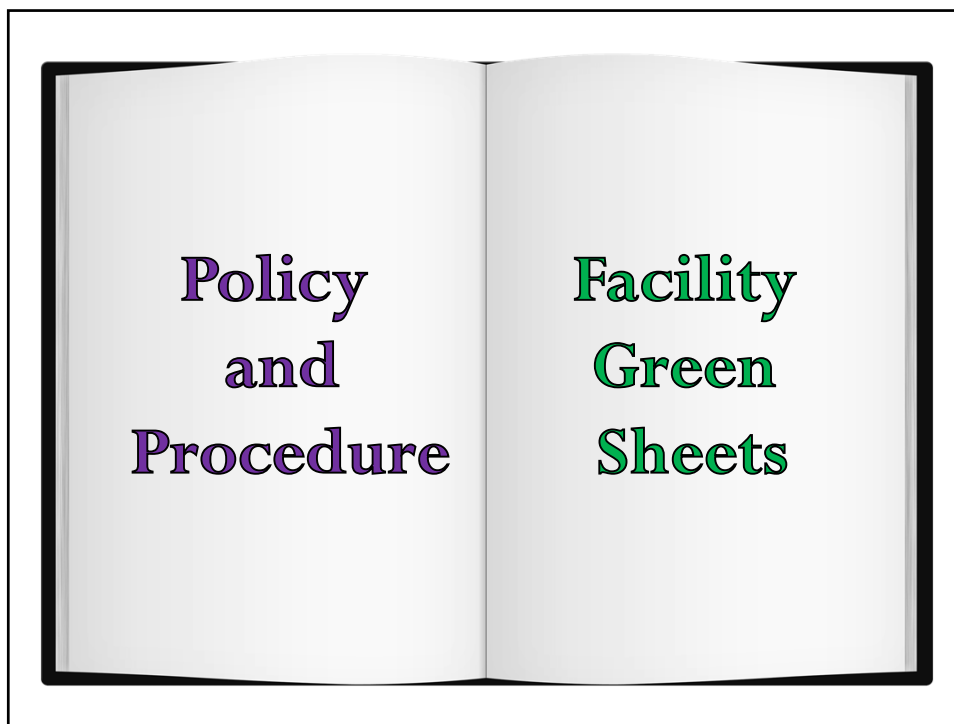
1026 PC

2970 PC

What Does Competency Mean?

- 1368 PC
- 1370.01 misdemeanors vs. 1370 felonies vs. 1370.1 (intellectually disabled) PC
- 1372 PC





Policy & Procedures/Facility Green Sheets

Admission Criteria

- Patients are admitted to PSU at the direction of
 - Psychiatrists
 - SDCPH/EPU



Security Measures

- Security checks are completed every 30 minutes

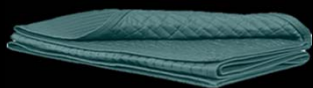


- Always notify medical staff of inmate movement happening outside of the unit
- Basic security precautions

Policy & Procedures & Facility Green Sheets

Identification/Wristband

- Inmates housed in PSU are issued **red** colored wristbands



Bedding/Clothing & Basic Items

- Inmates receive two security blankets (no cotton blankets)
- Issued normal jail issued clothing
- Toiletries allowed/banned from PSU

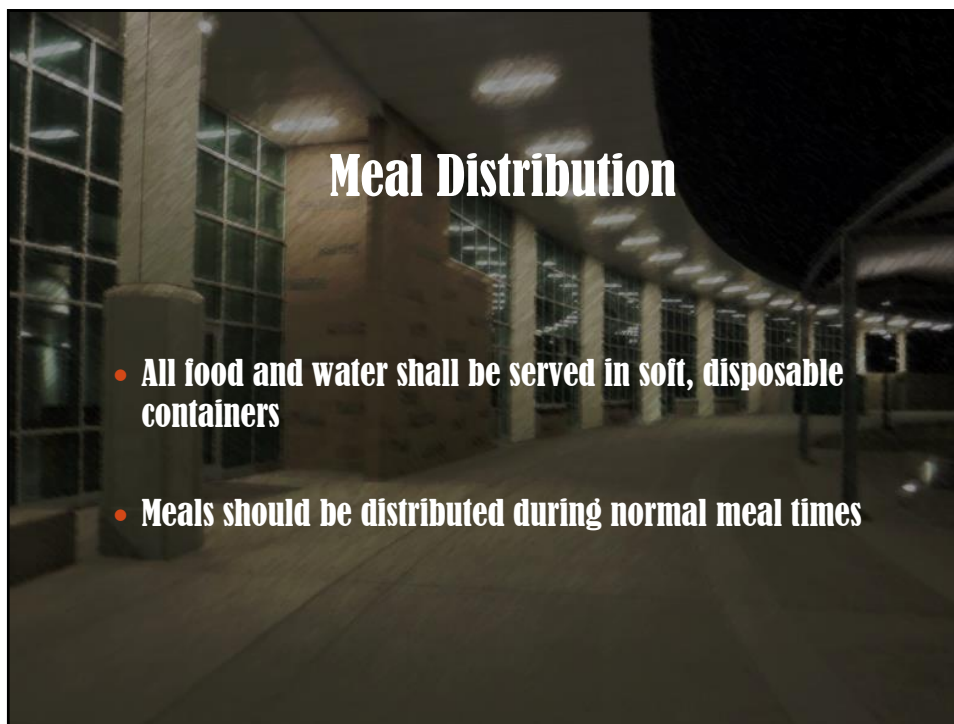
Policy & Procedures/Facility Green Sheets

Basic Unit Operations

- Facility Specifics
- PSU's work like a medical facility. Medical staff needs to stay in the loop on inmate status, security issues, etc.
- Sworn should make every effort to maintain normal operations within the unit
- Touchscreen operations

Use of Restraints

- Sworn staff will generally assist the nursing staff with application of the restraints
- Only restraints to be utilized in PSU are "four point" restraints
- The Pro-Strait Chair shall not be utilized



Meal Distribution

- All food and water shall be served in soft, disposable containers
- Meals should be distributed during normal meal times

Policy & Procedures/Facility Green Sheets

<u><i>Suicide Precautions in PSU</i></u>	<u><i>Releases (facility vs. street)</i></u>
<ul style="list-style-type: none">• Differences / Similarities of suicide precautions in PSU to other areas of the facility• Suicide Precaution and Close Observation or 1:1	<ul style="list-style-type: none">• Procedures for when an inmate is discharged from PSU and placed into another unit• Procedures for when an inmate is released to the community from PSU/Step Down unit• What paperwork is required?



