



William D. Gore
Sheriff

San Diego County

SHERIFF

LINE-UP TRAINING

NOVA / ICE Shield

Topic #92

After discussing/reviewing the below training material in line-up (briefing), sworn staff shall sign off as completed in LMS. In the event a staff member is not present when this topic is discussed in line-up, they shall independently read, review, and complete the training.

Completion of this line-up training topic includes reviewing the associated standardized presentation available on the DTU SharePoint site ([#92 Standard Presentation](#)).

By clicking "Yes" to "Have you completed this activity?" in LMS, you are attesting that you have viewed, read, and completed the training activity.

I. PURPOSE

The purpose of this training is to familiarize sworn staff with the procedures in the event there is an occurrence within a Sheriff's Department facility which requires the deployment of the NOVA/I.C.E. Shield.

II. POLICY

Authorized defensive devices shall be operated by trained and qualified personnel. Absent exigent circumstances, the watch commander, sergeant or their designee shall be notified prior to deploying. This training is conducted in adherence to [DSB P&P Section I.85 - Use of Defensive Devices](#), [DSB P&P Section I.89 - Use of Force](#), and [Addendum F Section - Use of Force Guidelines](#)

(Refer to the Standardized Power Point for details)

III. DISCUSSION

Staff will review and discuss the following topics and procedures related to the NOVA/I.C.E. Shield as described in the above P&P sections along with the manufacturer's (StunTronics) user manual.

A. GENERAL OPERATION & RESPONSIBILITIES

The NOVA/I.C.E Shield is a riot shield equipped with conductive strips that deliver 50,000 volts of electricity that will incapacitate a subject in the same manner as electronic devices previously described. The device is used to drive back or pin violent subjects, usually in a



detention setting. The Nova Shield must be approved prior to deployment by the watch commander or designee.

The NOVA/I.C.E Shield is considered less lethal and care must be exercised in its use. A subject receiving a charge is likely to lose balance and fall to the ground. Reasonable precautions should be exercised to reduce the potential for injury.

Whenever possible, the use of the ICE or NOVA Riot Shields should be documented on videotape.

1. NOVA/I.C.E SHIELD PREPARATION

- a. The shield shall be tested weekly to ensure the batteries remain at peak performance.
- b. Prior to use, inspect and activate the shield.
- c. Inspect for loose handles.
- d. Inspect for cracks in the shield.
- e. Inspect for cuts or tears in the metallic strips.
- f. The shield should not be activated upon a subject for more than eight seconds continuously.
- g. Assaultive behavior must be present for each application of electricity.

2. Description and specifications.
3. Effects of exposures.
4. Body application points
5. ICE Shield Maintenance

B. WARNINGS

In situations where any force used is capable of causing serious injury or death, there is a requirement that, whenever feasible, the deputy must first warn the suspect that force will be used if there is not compliance.

C. REPORTING PROCEDURES

Deputies must verbally inform their supervisor as soon as practical, but in no event later than the end of shift when the NOVA/I.C.E Shield has been deployed. The deputy's written report must include all pertinent facts relative to the use of the Nova Shield and notification of a supervisor (refer to section I.89 Use of Force for reporting procedures).

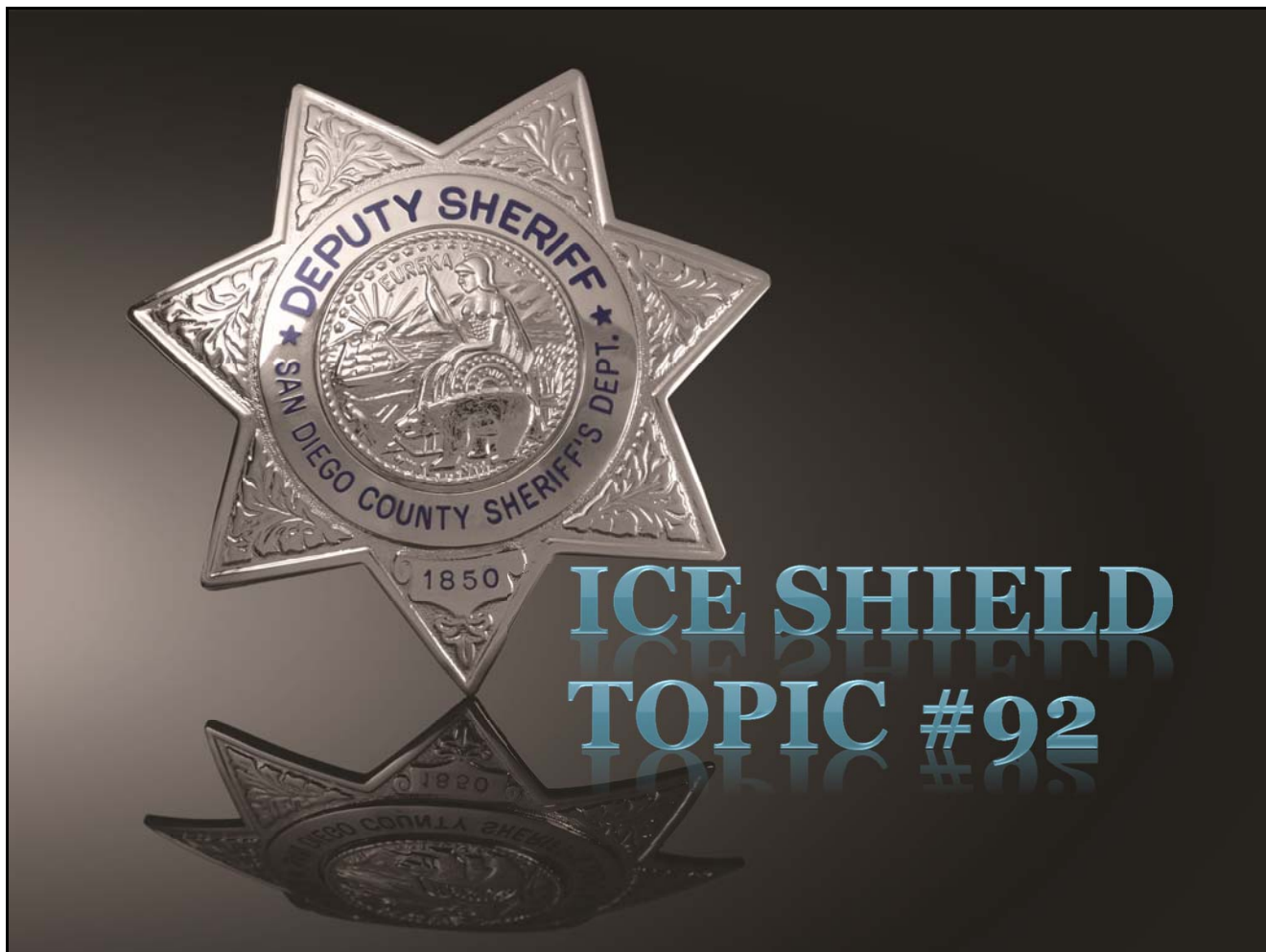
Personnel may display the device to the inmate prior to using it. If it is necessary to apply the device, the electronic current shall be discharged only as long as it is reasonable to bring the inmate under control.

D. INJURY OR DEATH:



Whenever inmates are subjected to an ICE or NOVA Riot Shield, once control has been established, all inmates shall be immediately rolled onto their side or into a seated position and monitored for consciousness and breathing. The inmate shall be immediately evaluated by detention medical staff and examined by a physician as soon as practical.

In the event of death caused by the use of the NOVA/I.C.E Shield, Department personnel will follow the procedures set forth in Section 8.2 of the Sheriff's Department Manual of Policy and Procedures and in the detentions setting, Section M.7 of the Detentions Services Policy and Procedure.



Policy



- Trained
- Qualified
- Addendum F
- 1.85
- 1.89

ICE Shield

- ⦿ Minimum of 1 trained deputy per shift
- ⦿ Display of device
- ⦿ Digitally recorder
- ⦿ After action plan



Description & Specs

- 2 Sizes
- Composition
- Power Source
- Trigger
- Voltage



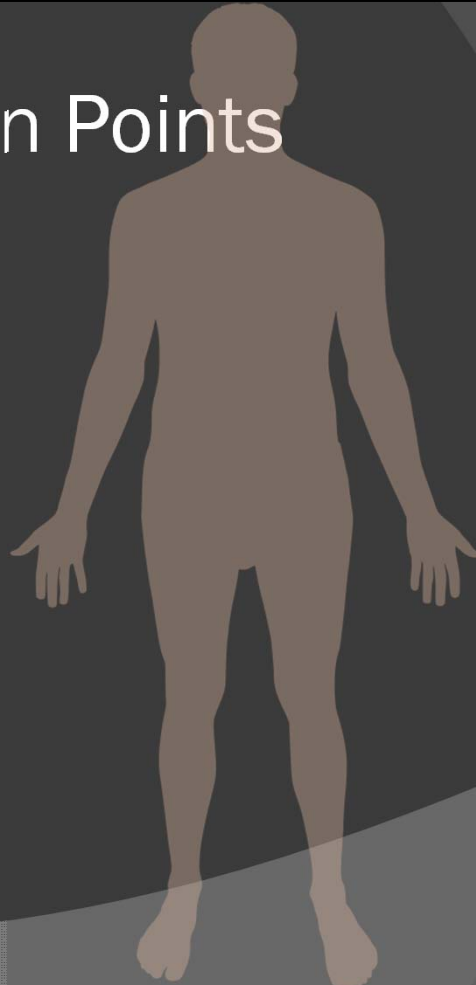
Effects of Exposures

- ⦿ ½ second
- ⦿ 1-2 seconds
- ⦿ 2-4 seconds
- ⦿ 4-6 seconds
- ⦿ Signature Marks



Body Application Points

- Duration
- Frequency
- Location
- Condition of recipient



ICE Shield Uses...



- Conventional Use
- Optional Compliance
- Repelling
- Stunning
- Full Takedown

Maintenance



- ◉ Cleaning
- ◉ Storing
- ◉ Battery Replacement
- ◉ Testing
- ◉ Inspections

