

Suicide Detection & Prevention #2

Line Up Training Topic #97 – Detentions Safety Program



Policies to Discuss

- J.5 Suicide Prevention Practices for Incarcerated Persons & Detentions Safety Program (DSP)
- J.4 Enhanced Observation Housing (EOH): Definition and Use
- J.1 Safety Cells: Definition and Use
- MSD.S.10 Suicide Prevention & Incarcerated Person Safety Program (MSD Policy and Procedure)



Definitions

Qualified Mental Health Provider (QMHP)

Assigned Designee

Suicide

Suicide Attempt

Self-Harm

Suicidal Ideation



Qualified Mental Health Provider (QMHP)

Refers to a Psychologist, Psychiatrist, Licensed Mental Health Clinician (MHC), Psychiatric Nurse Practitioner (PNP), or a contracted Psychiatric Registered Nurse (PRN).



Assigned Designee

Refers to staff assigned to perform certain tasks when a QMHP is not present in the facility. The assigned designee will be an assigned registered nurse for the shift at each facility.



Suicide

Death caused by self-directed injurious behavior with intent to die as a result of this behavior.



Suicide Attempt

A non-fatal, self-directed, potentially injurious behavior with the intent to die as a result of the behavior; might not result in injury. This includes behavior that would likely have resulted in death or serious injury had staff not intervened.



Self-Harm

The act of deliberately causing destruction and/or damage to one's body.



Suicidal Ideation

Thinking about, considering or planning suicide.



Risk Factors

What are some potential Risk Factors that would lead to an assessment for placement into the Detentions Safety Program (DSP)?



Risk Factors That **Require** Further Assessment

1. High Publicity Case
2. Severe, life or death sentences
3. The incarcerated person states they are suicidal and/or made suicidal statements to sworn staff
4. Previous suicide attempts (within the past five years)
5. Staff observation of depressed/emotional turmoil



Risk Factors That **May** Initiate An Assessment

1. History of psychiatric illness
2. First time offender
3. Intoxication/withdrawal
4. Severe Aggressiveness
5. Physical signs of depression

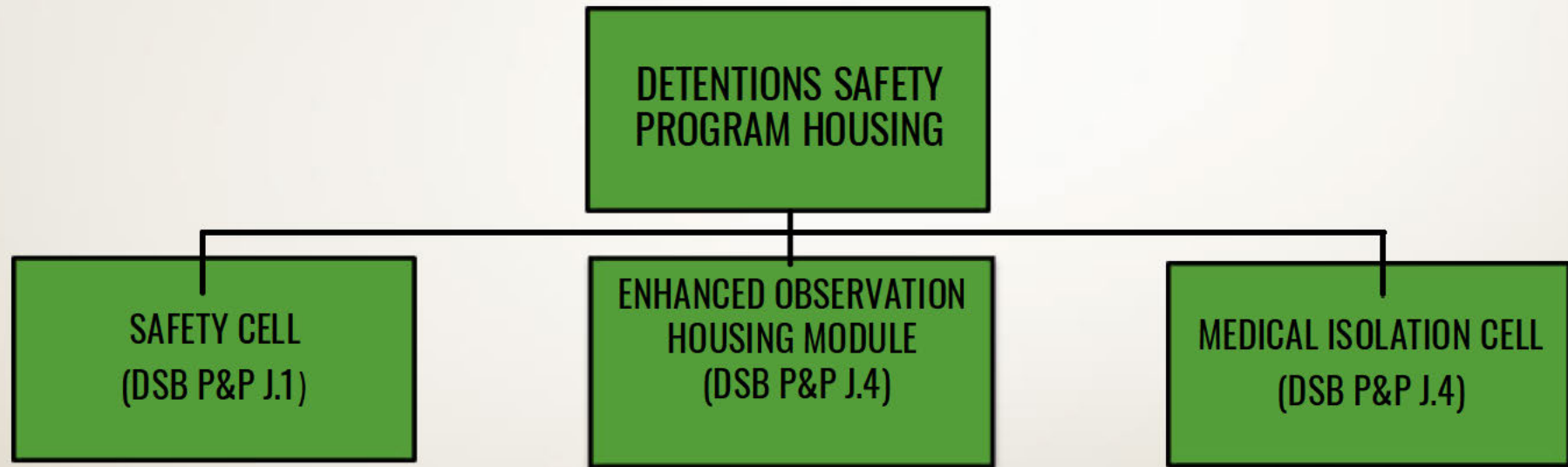


Assessments

- The Facility Gatekeeper is responsible for evaluation/determination of the need for DSP placement
- In exigent circumstances, the watch commander may determine if DSP placement is necessary (requires WC documentation)



Detentions Safety Program Housing Options



***Detentions safety program housing is not to be used for punishment or a substitute for treatment.**



Safety Cells

- Only ACTIVELY self-harming or ACTIVELY assaultive incarcerated persons may be temporarily placed in a safety cell.
- The facility gatekeeper shall assess the incarcerated person within every 4 hours to determine if continued retention in the safety cell is required.
- If the facility gatekeeper determines the incarcerated person is no longer actively self-harming or actively assaultive, the incarcerated person shall be moved from the safety cell to Enhanced Observation Housing (EOH).



Enhanced Observation Housing (EOH)

- Incarcerated persons that require placement in the Detentions Safety Program (DSP) that do not meet the criteria for a safety cell, shall be temporarily placed in EOH to provide close observation and assessment
- An incarcerated person that becomes actively-self harming or actively assaultive may be moved from EOH to a safety cell



Fluid System Based On Observations



During Intake

- All incarcerated persons screened for suicide risk factors. If DSP housing is deemed necessary by the facility gatekeeper
- WC will be notified of need for placement (safety cell or EOH)
- Any medically unstable incarcerated person will be rejected and sent to ER, then EPU prior to acceptance
- If any differing recommendations between EPU doctor and the facility gatekeeper, the EPU doctor is to be contacted for further consult/update



Safety Cell Placement

- All clothing, property, etc. removed from incarcerated person
- **ALL** are issued a safety garment
- Justification needed for removal of safety garment



EOH Placement

- All clothing, property, etc. removed from incarcerated person. **ALL** are issued a safety garment, two security blankets, and shower shoes
- Showers, dayroom, television, and professional, and social phone calls will be offered
- Access to books, magazines, and newspapers is permitted



Monitoring

- Staff shall closely monitor all incarcerated persons in DSP housing
- Every incarcerated person shall be directly observed by sworn staff at **RANDOM** intervals not to exceed 15 minutes between checks



Nursing Assessments

SAFETY CELLS

- Initial nursing assessment within 30 minutes of placement.
- Facility gatekeeper observation every 4 hours (for continued retention)
- Medical assessment every 24 hours thereafter (if retained in safety cell)

EOH

- Initial nursing assessment within 30 minutes of placement.
- Nursing assessment every 24 hours thereafter



QMHP Assessments

- In the event an incarcerated person is continuously retained in a safety cell, a QMHP assessment is to be completed within every 12 hours
- For EOH, Initial QMHP assessment within 24 hours



Post Suicide Attempt

If the incarcerated person requires immediate treatment in an emergency department

- Evaluation by EPU psychiatrist prior to returning to the facility
- Facility gatekeeper reviews EPU orders for DSP placement



DSP Clearance

- Removal/clearance from DSP is determined solely by a QMHP
- Two consecutive "Low Risk" QMHP assessments
- 12-24 hours between each QMHP assessment
- Exigent removal due to medical condition requires WC approval and documentation (if done without QMHP consult)



Documentation

- Assessment- Incarcerated Person Status Report
- Placement- Incarcerated Person Status Report
- Update- Incarcerated Person Status Report
- Watch Commander documentation
- J-19A Form (safety cells only)



The background features a large, faint, light-gray seal of the Sheriff's Office of Eureka, California. The seal is circular with a five-pointed star border. Inside the circle, the word "SHERIFF" is at the top and "EUREKA" is at the bottom, separated by a dotted line of stars. The central illustration depicts a Native American figure in traditional dress, holding a spear and a shield. To the left of the figure is a landscape with a rising sun, mountains, and a small boat. To the right is a sailing ship. At the bottom of the seal, there is a bear and a plow.

Questions?

GC 7922.000 - Work Phone

DETENTION TRAINING UNIT