

40MM SPECIALTY MUNITIONS LAUNCHER (SML)



LEARNING OBJECTIVES

Characteristics and types of 40mm launchers

Characteristics and types of 40mm munitions

Demonstrate function check and operation

Discuss deployment considerations

Practical Application



MULTI SHOT LAUNCHER

- ✓ Model Number PGL-65, Penn Arms
- ✓ Barrel length is 11" and rifled
- ✓ Weighs 9 lbs. (unloaded)
- ✓ Weaver Rail with Ghost Ring sights
- ✓ 6 Shot Cylinder / Pump Action
- ✓ Double action trigger / Manual Safety



MULTI SHOT LAUNCHER NOMENCLATURE



SINGLE SHOT LAUNCEHR

- ✓ Model Number TGL-1
- ✓ Barrel length is 14" and rifled
- ✓ Weighs 6.75 lbs. (unloaded)
- ✓ Weaver Rail with Ghost Ring sights
- ✓ 1 Shot
- ✓ Single action or double action trigger
- ✓ No manual safety



SINGLE LAUNCHER NOMENCLATURE



GHOST RING SIGHTS

- ✓ Accurate, easy to use and obscures the target less than nearly all other non-optical sights.
- ✓ Considered by some to be the fastest type of aperture sight.



Intermediate Force: Refers to forms of force capable of inflicting significant pain and causing injury. Passive or active resistance to arrest alone does not constitute an immediate threat justifying the use of intermediate force.

Intermediate Munitions: Used for long range impact and electronic immobilization devices also fall within the intermediate weapons' category

Specialty Munitions: Projectiles used as intermediate force options capable of inflicting significant pain and causing serious injury but force less severe than lethal force.

Policy Section 11



- **Trained personnel may use specialty munitions as deemed reasonable and necessary based upon the circumstances of the incident. Absent exigent circumstances, the watch commander or designee shall be notified prior to deployment of specialty munitions in the detention setting.**
- **Deputies shall not use any of the defensive devices listed in DSB P&P I.85 Use of Defensive Devices, on an incarcerated person known or suspected to be pregnant, or in recovery after delivery (see DSB P&P section M.38).**

Procedures & Pregnant People



Unintentional Discharge

- In the event an UD occurs with any of the defensive devices, the deputy who discharged the device shall write a Miscellaneous Incident Report in NicheRMS documenting the circumstances surrounding the UD. The deputy's direct supervisors must be notified of the UD, and the facility training coordinator(s) must be informed in order to replace any munitions (if applicable).

eXact iMpacT ROUND CHARACTERISTICS

- ✓ Travels at 325 feet per second
- ✓ Range: 5-120 feet
- ✓ Impacts at 115 ft.-lbs.
- ✓ Marked by the silver casing



eXact iMPact EXTENDED RANGE

- ✓ Travels at 400 feet per second
- ✓ Range: 33 - 230 feet
- ✓ Impacts at 170.95 ft.-lbs.
- ✓ Marked by black casing
- ✓ LCRDF & EMRF are the only facilities authorized to deploy Extended Range rounds.



TRAINING ROUNDS

- ✓ Training Rounds are reloadable
- ✓ Only requires one Hex Key
- ✓ Should be fired at a training target with a rubber backing behind it
- ✓ **Never fire at a live target**



ONLY APPROVED MUNITION



HARD RUBBER
(BLACK)



OC ROUND
(ORANGE)



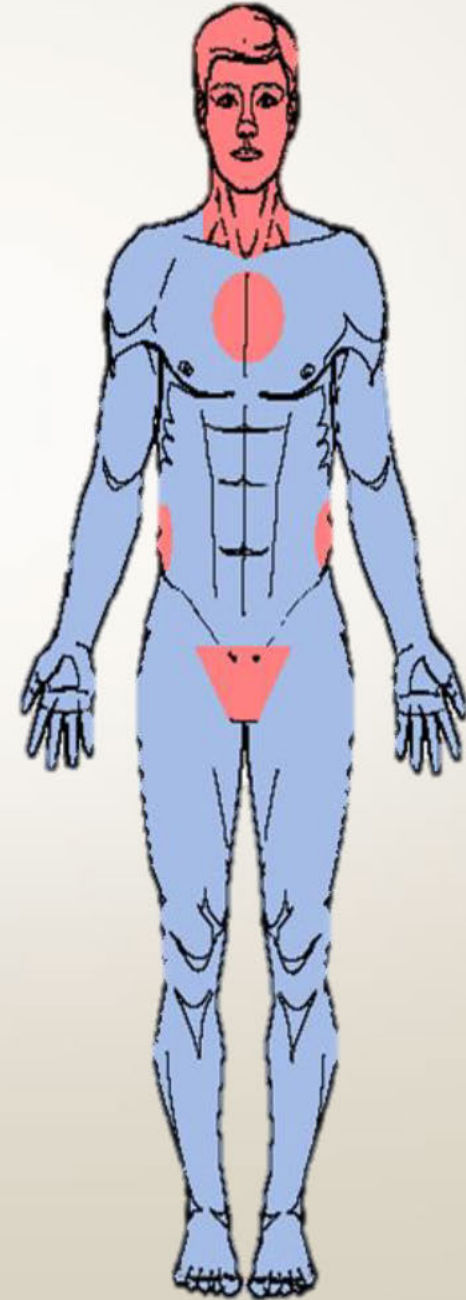
MARKING ROUND
(GREEN)

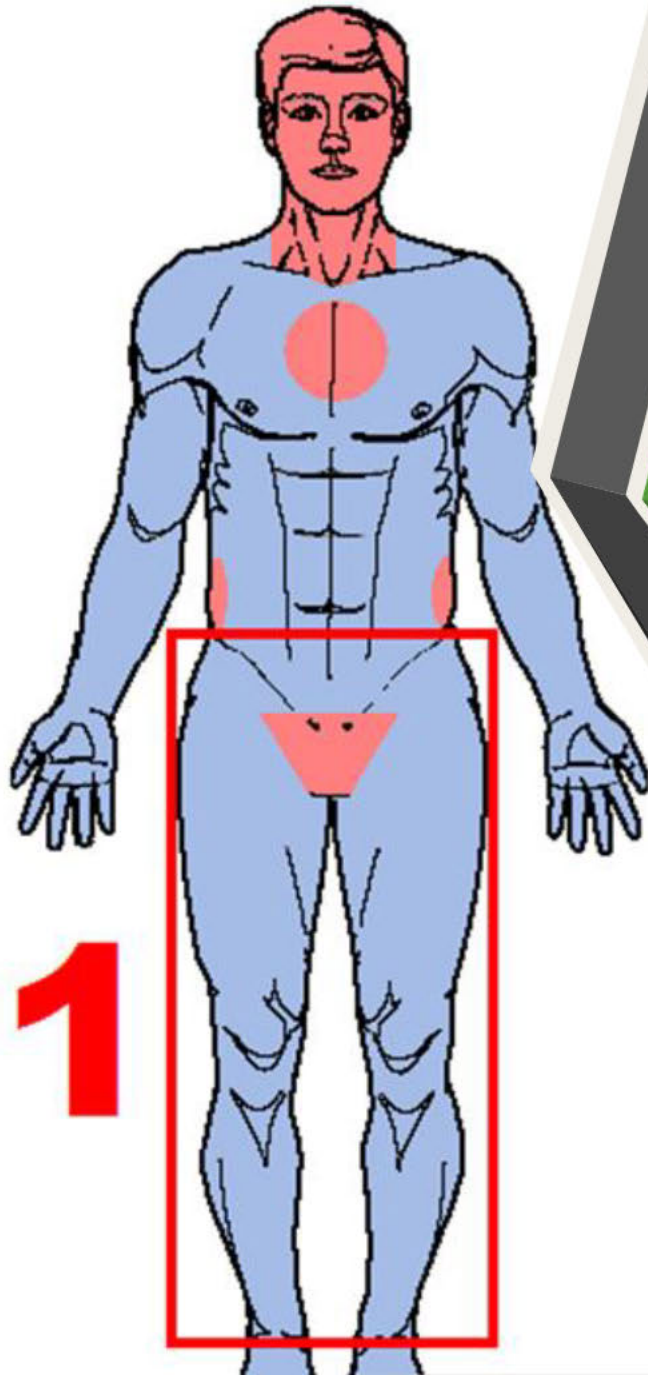


TARGETING

Deployments to “Center Mass” provide for the highest probability of causing immediate incapacitation, but also have the potential to cause serious injury or death.

Areas such as the head, neck, spine and groin should be avoided if possible.

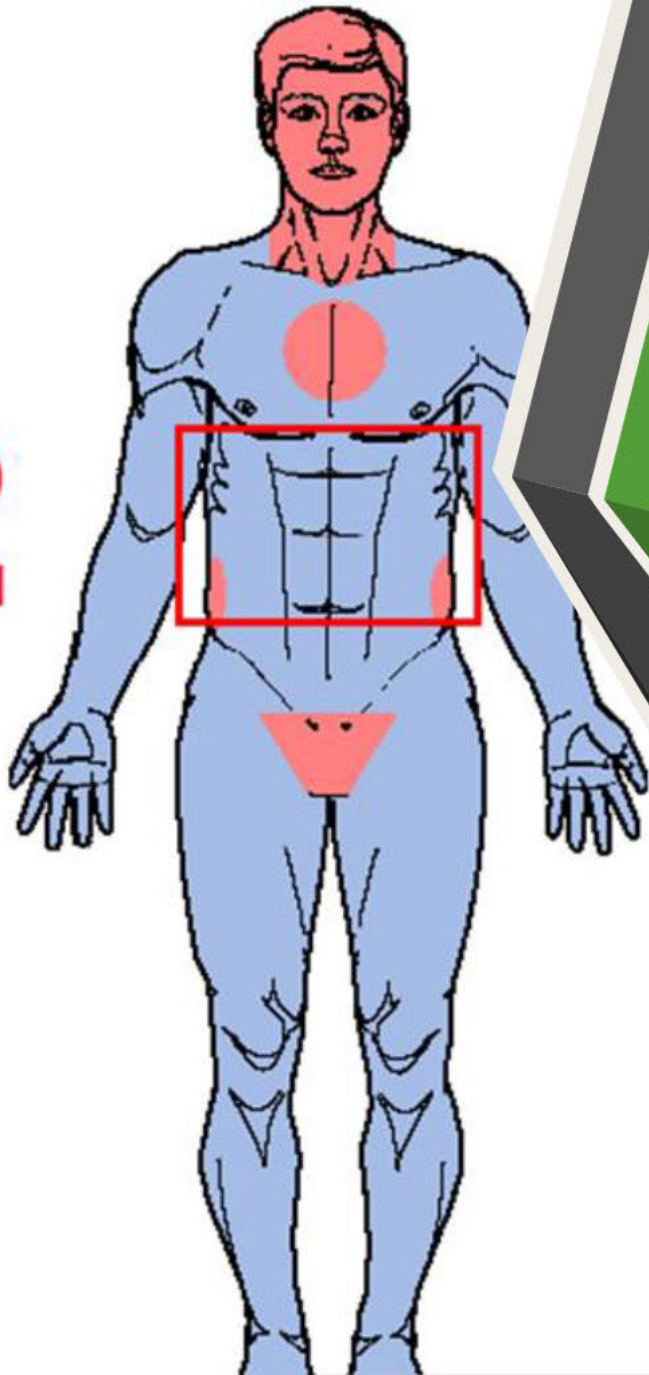




PRIMARY TARGETING AREA



2



SECONDARY TARGETING AREA

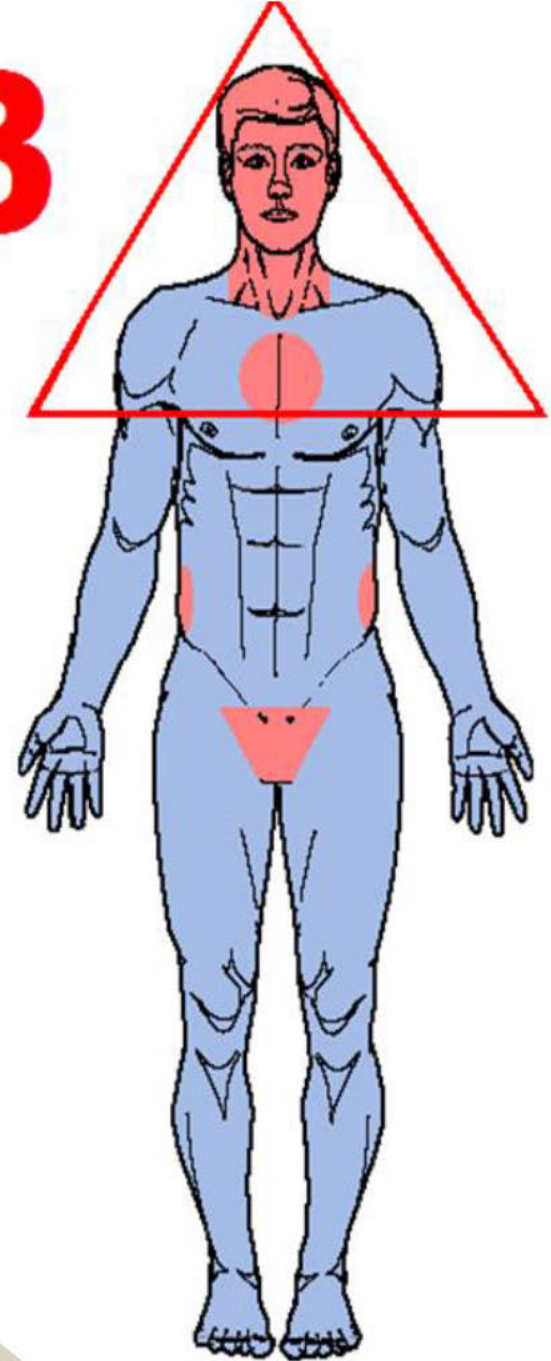


THIRD TARGETING AREA



**LEAST DESIRABLE DUE TO THE CLOSE
PROXIMITY TO THE FACE NECK AND CHEST**

3



CLOSE RANGE ENGAGEMENTS



**PENETRATION IS THE LEAST
DESIRED RESULT**



**PENETRATION IS THE LEAST
DESIRED RESULT**

MEDICAL

- Does an incarcerated person need to see health staff after they are struck by a 40 MM round?
✓ **YES**
- When should health assessment and treatment take place?
✓ **As soon as practical**



MULTI LAUNCHER FUNCTION CHECK

Engage safety

Open the frame and check the cylinder and barrel to verify that the launcher is unloaded.

When you have verified the launcher is clear, close the frame and ensure the catch lever is fully closed.

With safety "ON" (Passenger side), pull the trigger. Hammer should not fall



Function check continued...

Push fore grip forward. The chamber should align with the barrel.

Push safety "OFF" (to driver side).

Pull trigger until hammer drops onto firing pin.

Release trigger and "Pump" fore grip back towards you until it stops and forward again in one fluid motion.

Pull the trigger. Repeat this procedure until you are satisfied with the operation and proper function.



MULTI LAUNCHER LOADING

1. Depress cylinder release lever while maintaining control of the fore grip
2. Load cylinder with desired munition. When loading, start at the 11 O'clock position and load counterclockwise.
3. First round to be fired should be placed at the 11 O'clock position
4. Close the cylinder (Stock up). Ensure catch lever is fully closed
5. Disengage safety (push from right to left)
6. Push ("pump") fore grip forward to stop. The chamber is now aligned and locked in position
7. Acquire good sight picture with ghost ring sights and pull trigger



MULTI LAUNCHER UNLOADING



Ensure safety is “ON”



Open the frame and remove casings one at a time or dump casings out (Be cautious for hot casings)



Close and store launcher away



REPORTING PROCEDURES



- ✓ Notify supervisor as soon as practical, but no later than end of shift.
- ✓ Take photographs and document details promptly.
- ✓ ***Incarcerated people struck by specialty munitions shall receive medical assessment and treatment by facility health staff as soon as practical.***
- ✓ ***Force includes the pointing of any firearm or weapon designed to fire a projectile***
- ✓ ***One SO-120 Supplemental Report must be completed for each incarcerated person struck by the specialty munition.***
- ✓ In the event of death caused by a specialty munition, Department personnel will follow the procedures set forth in section 8.2 of the Sheriff's Department Manual of Policy and Procedures and in the detentions setting, section M.7 of the Detentions Services Policy and Procedure.

The background of the slide features a large, faint, light-gray seal of the San Diego County Sheriff's Office. The seal is a seven-pointed star with a central circular emblem. The emblem depicts a Minuteman soldier standing on a rock, holding a long rifle. To his left is a ship on the water, and to his right is a landscape with a rising sun and mountains. The words "SHERIFF" and "EUREKA" are arched above the central figure, and "SAN DIEGO COUNTY" is arched below. The star's points are decorated with floral patterns. A diagonal graphic consisting of a green and a dark gray band runs from the top-left corner towards the bottom-center.

Questions?

GC 7922.000 - Work Number

DETENTION TRAINING UNIT