

Irritant Filled Projectile Munitions System (IFPMS)



P&P REVIEW

- I.85 USE OF DEFENSIVE DEVICES
- SECTION 11: USE OF FORCE GUIDELINES
- FACILITY GREEN SHEETS & POST ORDERS



IFPMS DEFINED

- Irritant filled projectile munitions systems are specialty munition chemical agent delivery system that uses high-pressure air launchers to deliver chemical agents from a safe distance.
- Combines chemical agent exposure with kinetic impact.
- Chemical agents may be used when there's an **immediate threat** to the safety of the deputy or others.



Intermediate Force:

Force capable of inflicting significant pain and causing serious injury. Passive or Active resistance alone does not constitute an immediate threat justifying the use of intermediate force.

Intermediate Munitions:

Used for long range impact and electronic immobilization devices also fall within the intermediate weapon's category.

Specialty Munitions:

Projectiles used as intermediate force options capable of inflicting significant pain and causing serious injury but force less severe than lethal force.

P&P SECTION 11



Unintentional Discharge

- In the event an UD occurs with any of the defensive devices, the deputy who discharged the device shall write a Miscellaneous Incident Report in NicheRMS documenting the circumstances surrounding the UD. The deputy's direct supervisors must be notified of the UD, and the facility training coordinator(s) must be informed in order to replace any munitions (if applicable).

- Trained personnel may use specialty munitions as deemed reasonable and necessary based upon the circumstances of the incident. Absent exigent circumstances, the Watch Commander or designee shall be notified prior to deployment of specialty munitions in the detention setting.
- Deputies shall not use any of the defensive devices listed in DSB P&P I.85 Use of Defensive Devices, on an incarcerated person known or suspected to be pregnant, or in recovery after delivery (see DSB P&P section M.38).

Procedures & Pregnant Inmates



SA 200 IFPMS

- 3,000 psi HPA bottle
- Gravity-fed hopper
- Firing rate: 6 rounds per second
- Action: Semi-auto
- Weight: 3.5 lbs.



The SA 200 has a breach that can be manually opened/closed and a charging handle on the side



FT-12 IFPMS

- 3,000 psi HPA bottle
- Gravity-fed hopper
- Firing rate: 6 rounds per second
- Action: Semi-auto

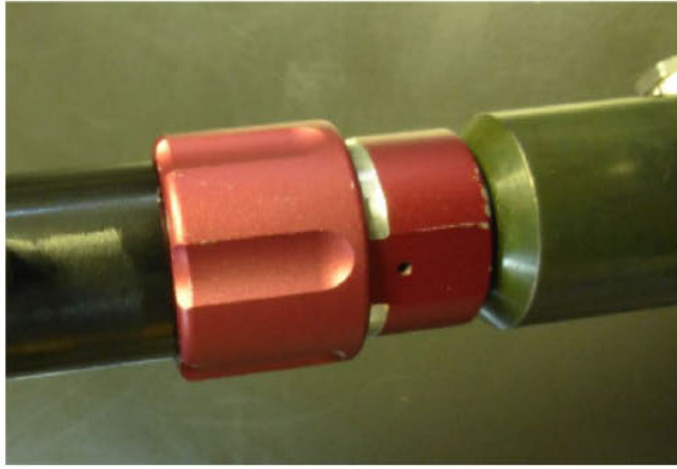


The FT-12 has a closed breach and a charging handle on top of the device.



REMEMBER YOUR ABC'S

AIR



BREACH



CHARGING HANDLE



SAFETY



IFPMS ADVANTAGES

- Less severe than lethal force
- Reduces liability / lawsuits
- Multiple projectiles, one platform
- No minimum range
- High capacity – 150 projectiles
- Measurable and specific targeting
 - Controlled application
 - Specific area saturation
- Effective on hidden / barricaded suspect
- Ability to escalate or de-escalate force as appropriate.
- Allows to maximize time and distance to ensure safety.



PROJECTILE LIMITATIONS



- Kinetic effect on heavy or padded clothing
 - Projectile may not break on impact
- 14 – 16 % of population are unaffected by PAVA.
- Suspects under the influence of drugs and alcohol.
- Suspects who are mentally ill, enraged, or highly emotional.
- Environmental factors such as: Wind, rain, snow.
- Short shelf life – 3 years (per PepperBall).

PROJECTILE CHARACTERISTICS

- Hard, plastic frangible (breakable) sphere
- PAVA cloud two feet in diameter
- 0-60 ft. individual target range / 0-150 ft. for area saturation (non-target specific)
- Weight: Three grams
- Velocity: 300 to 350 fps (feet per second)
- Kinetic impact: 10 to 12 ft./lbs. of energy
(Compare to a Bean Bag round impact: 110 ft./lbs.)
- Stable in extreme temperatures (-30 to +150F)



APPROVED PROJECTILES



Red

PAVA

Live Fire

.5% Chemical Agent

Kinetic Impact

Individual 0-60 ft.

Area Saturation 150 ft.

10-12 ft. lbs/kinetic energy



Clear

Water

Live Fire

Kinetic Impact

Individual 0-30 ft.

10-12 ft. lbs/kinetic energy



Purple

Inert Powder

Live Fire

Kinetic Impact/Training

Individual 0-60 ft.

10-12 ft. lbs/kinetic energy

FOR TRAINING ONLY



"Z-Ball"

Rubber/Reusable
round

Training

Individual 0-60 ft.

FOR TRAINING ONLY

FOR TRAINING ONLY

FOR TRAINING ONLY

Sold by PepperBall



APPROVED PROJECTILES



Red

Pava

Live Fire

4% Pava, 1% OC

Kinetic Impact

Individual 0-60 ft

Area Saturation 150ft



Yellow

Talcum Powder

Training

Kinetic Impact

Individual 0-60 ft

Area Saturation 150ft



"RubberBall"

Rubber/Reusable
round

Training

Individual 0-60 ft.

FOR TRAINING ONLY

FOR TRAINING ONLY

Sold by Tactical Tech LLC
Made by Duke Defense



- **Warnings:** In situations where any force used is capable of causing serious injury or death, there is a requirement that, whenever feasible, the deputy must first warn the suspect that force will be used if there is not compliance. - *Section 11*
- Communicating to partners that specialty munitions are being deployed.
- Verbal commands before, during, and after deployment.
- Is suspect disoriented?

COMMUNICATION

TACTICAL CONSIDERATIONS

- Consider area saturation first by impacting surrounding objects like walls, ground, and ceiling.
- Target from upper torso down.
 - Recommend 6 o'clock hold with front sight of launcher.
- Anticipate suspect lowering head.
- Justify each use of force.
- Always follow department policy.



Suspect lowering head



TARGET AREAS

- Torso down
- Anticipate suspect lowering head
- Shins
- Knees
- Thighs
- Shoulders
- Back
- Chest (not on females)
- Stomach
- Butt
- If no area of the body is affected, aim for walls, floor, ceiling, etc. for area saturation.



AREAS TO AVOID

****AVOID AIMING FOR HEAD, NECK, THROAT, FACE, SPINE, AND GROIN****



ANAPHYLACTIC SHOCK / REACTION

- **0.05% Are allergic to O.C.**
- **Anaphylaxis is a severe, whole-body allergic reaction to a chemical that has become an allergen.**
- **Symptoms develop rapidly, often within seconds or minutes.**

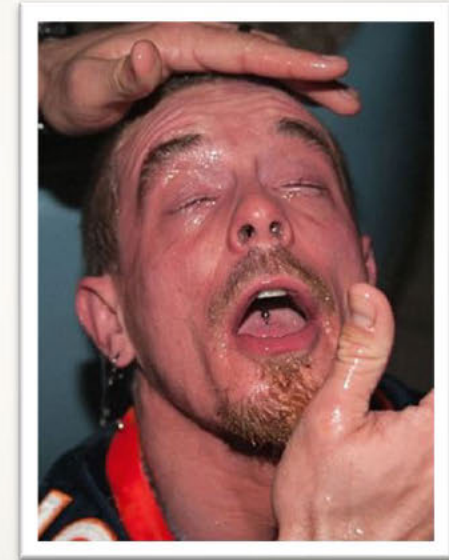
Symptoms may include the following:

- | | |
|-----------------------------|-----------------------------|
| ✓ Abdominal Pain/Cramping | ✓ Fainting, Light-Headaches |
| ✓ Abnormal Breathing Sounds | ✓ Hives, Itchiness |
| ✓ Anxiety | ✓ Nasal Congestion |
| ✓ Confusion | ✓ Palpitations |
| ✓ Cough | ✓ Skin Redness |
| ✓ Diarrhea | ✓ Slurred Speech |
| ✓ Difficulty Breathing | ✓ Wheezing |
| ✓ Difficulty Swallowing | |



DECONTAMINATION

- Fresh Air and Cool Clean Water
- Normal Recovery Time 10-30 minutes
- Keep Person Calm
- Assure Suspect is Safe
- Condition Temporary
- Unusual Reaction
 - ✓ Consider Medical Attention
- Cross-contamination



- Notify supervisor as soon as practical, but no later than end of shift.
- Take photographs and document details promptly.
- ***Incarcerated persons struck by specialty munitions shall receive medical assessment and treatment by facility health staff as soon as practical.***
- ***Force includes the pointing of any firearm or weapon designed to fire a projectile***
- ***One SO-120 Supplemental Report must be completed for each incarcerated person struck by a specialty munition in NicheRMS.***
- In the event of death caused by a specialty munition, Department personnel will follow the procedures set forth in section 8.2 of the Sheriff's Department Manual of Policy and Procedures and in the detentions setting, section M.7 of the Detentions Services Policy and Procedure.

REPORTING PROCEDURES



FILL STATION NOMENCLATURE

Compression
Knob



Fill
Adapter

Quick-Release Fitting
(O-ring inside)



Pressure release knob



Main Valve

O-ring



MAINTENANCE BY END USER

- Damp cloth to wipe the launcher down
- **DO NOT** use gun cleaning solvents or gun oils



The background of the slide features a large, faint, light-gray seal of the San Diego County Sheriff's Office. The seal is a seven-pointed star with a central circular emblem. The emblem depicts a Minuteman soldier standing on a rock, holding a long rifle. To his left is a ship on the water, and to his right is a landscape with a rising sun and mountains. The words "SHERIFF" and "EUREKA" are arched above the central figure, and "SAN DIEGO COUNTY" is arched below. The star's points contain decorative floral patterns. On the left side of the slide, there are three diagonal stripes: a green one at the top, a dark gray one in the middle, and a lighter gray one at the bottom.

Questions?

GC 7922.000 - Work Number

DETENTION TRAINING UNIT