

San Diego County Sheriff's Department Reentry Services Division



"We provide evidence-based reentry services striving to reduce recidivism and increase public safety in collaboration with criminal justice partners and community agencies"

Presentation by Reentry Services Division

Welcome and Introductions



Group Activity

- Break up into groups of 4-5 and discuss what you know about the following topics:
 - AB 109
 - Reentry
- Materials Needed:
 - Poster Paper
 - Markers



join together collaborate connect unite partner community work move create build share

Public Safety Realignment AB 109

- State Problems
 - Overcrowding
 - High recidivism rates
 - Inefficient programming
 - Lack of appropriate medical and mental health services
- AB 109 intent
 - October 2011
 - Reducing recidivism
 - Reinvest criminal justice resources
 - Realign low level felony offenders to locally run community based corrections programs

Fundamental Change to the Criminal Justice System

- Permanent Shift of Offender Population from State to County
 - Post Release Community Supervision (PRCS) Offenders
 - Local Imprisonment (Non, Non, Non's – 1170 PC)
 - Local Custody of Parolee Violators
 - Court Revocation of PRCS and Parole Violations



San Diego Realignment Goals

1

- Efficiently Use Jail Capacity

2

- Incorporate Reentry Principles into In-Custody Programming

3

- Incorporate Evidence-Based Practices into Supervision and Case Management of Post Release Offenders

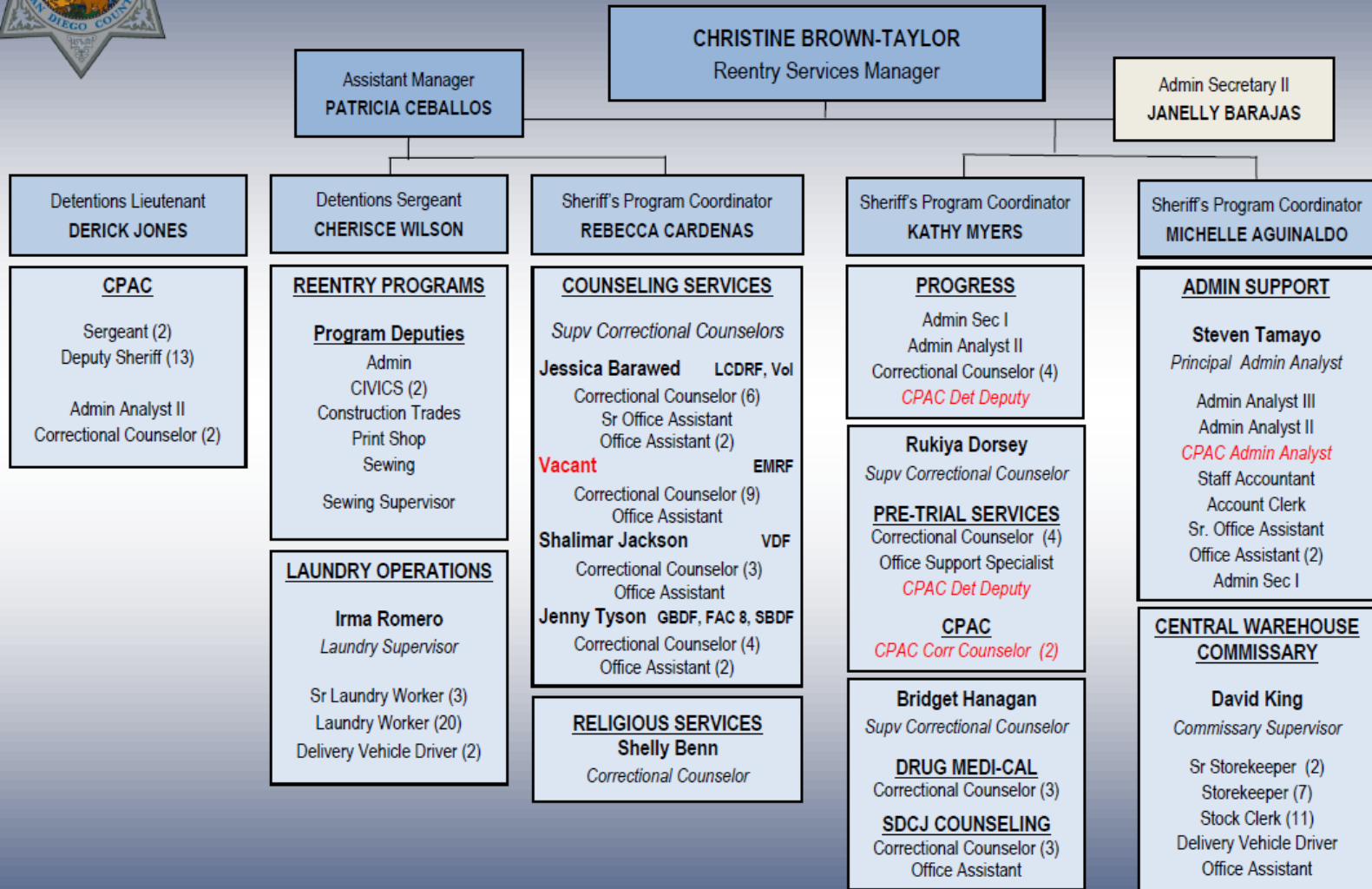
County News

[San Diego County Realignment](#)



SHERIFF'S DEPARTMENT - REENTRY SERVICES DIVISION

Detention Operations Area 1: Commander Frank Clamser



Reentry Services Division

■ **Pretrial Services**

- Court Recommendations
- Liaison in Court
- SB 10

■ **Correctional Counseling**

- Programming
- Case Management
- Reentry Planning

■ **Stepping Up Initiative**

- Discharge Planning
- Coordinated Releases
- PROGRESS

• **Commissary**

- Jail Stores
- Warehouse

• **Program Deputies**

- Special Assignments
- Vocational Supervision

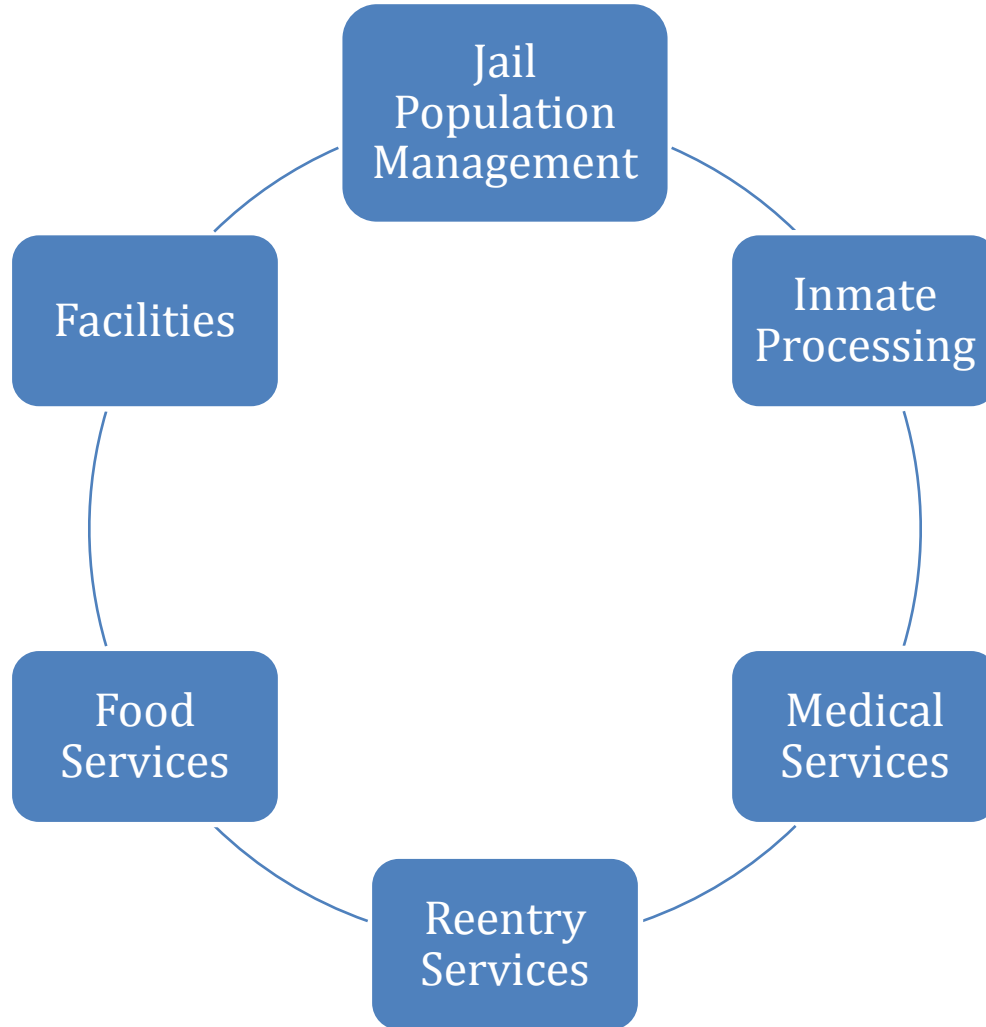
• **Laundry**

- All Laundry
- Uniform Repairs

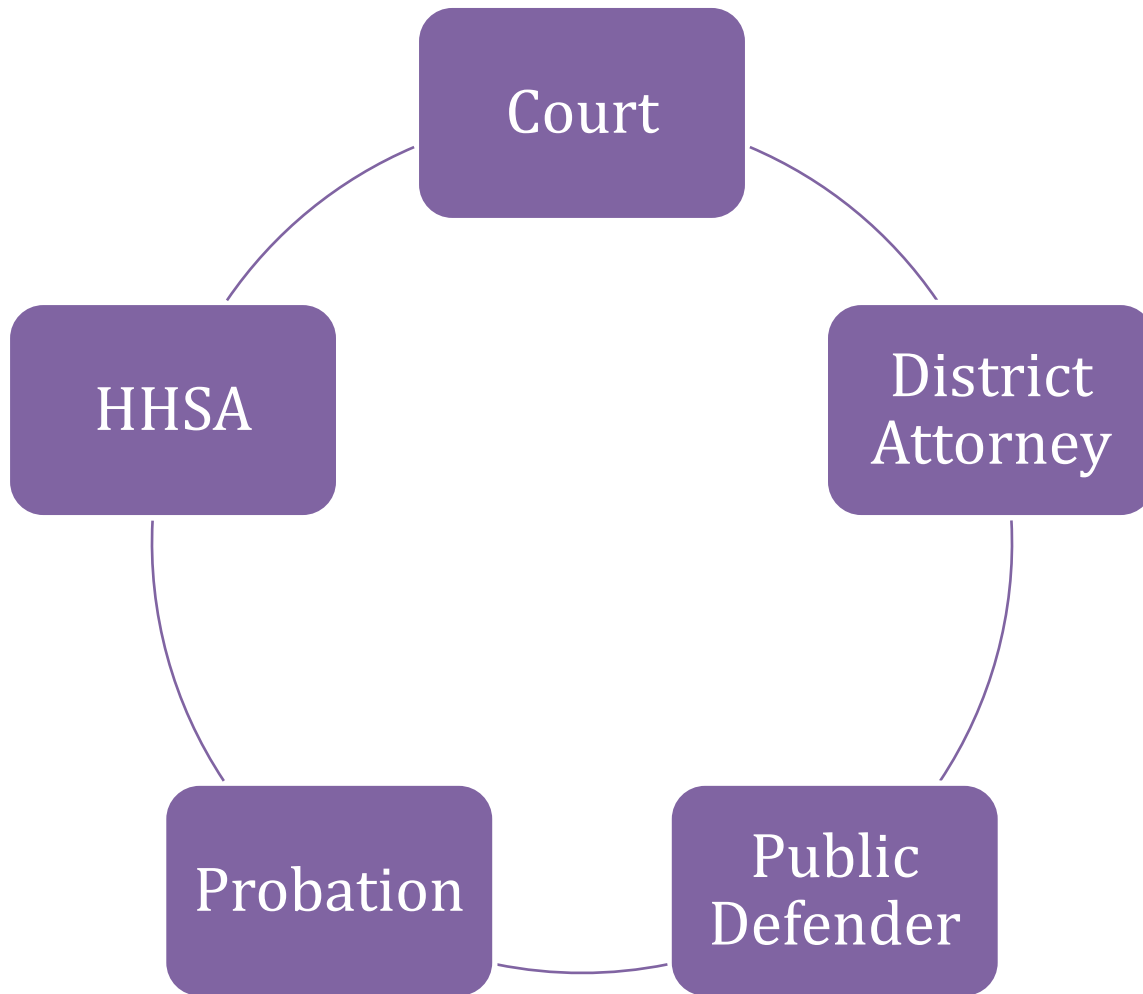
• **Administrative**

- Inmate Welfare
- Contract Management

Internal Collaboration



County Collaboration



Evidence Based Practices

- What is evidence based practices in corrections mean?

Addressing Individual Needs

- **Psych-Social**



- **Education**

- **Vocation**



- **Wellness**

- **Coordinated Reentry**



Assessments

- **Booking**

- Proxy

- **Pretrial Services**

- PSII

- **County Parole and
Alternative Custody**

- COMPAS

- **PROGRESS**

- TCU
- Correctional Mental
Health Screen

- **Counseling**

- COMPAS (Probation)
Program
recommendations

Group Activity

- Break up into groups of 4-5
- Identify community issues
- Materials needed
 - Poster Paper
 - Markers



Reentry by Facility

- **GBDF/Fac 8**
 - Ad Seg
 - High Level
- **SDCJ**
 - Mental Health
 - HSAT
- **VDF**
 - Veteran's Program
 - IBH
- **SBDF**
 - Low Level
 - Individual Services
- **EMRF**
 - Intensive Reentry Services
- **LCDRF**
 - Intensive Gender Responsive Trauma Informed Reentry Services
- **CPAC**
 - Alternative to custody
 - Community programming

Short Term Reentry

- Connection to community resources
- DMV California Identification
 - 1907 total (2015-2018)
- ACA enrollment
 - 125 per month
 - 5986 total (2014-2018)

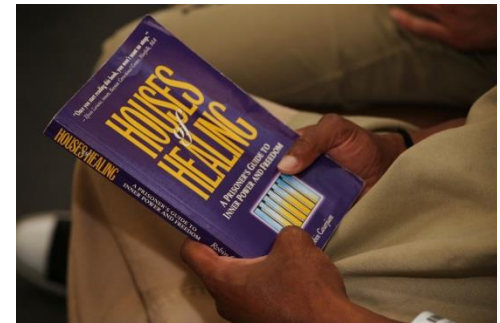


**COVERED
CALIFORNIA**



Long Term Reentry

- 1,200 volunteers/contract staff
- Partnerships with over 25 community agencies
- Specialized Housing Areas
 - Administrative Segregation
 - Incentive Based Housing (IBH)
 - Mental Health (JBCT)
- Facility Orientations-Flow
- Case Management



Program Partners

- Community based organizations
- Faith-based organizations
- Contract providers
- Community colleges



Community Collaboration

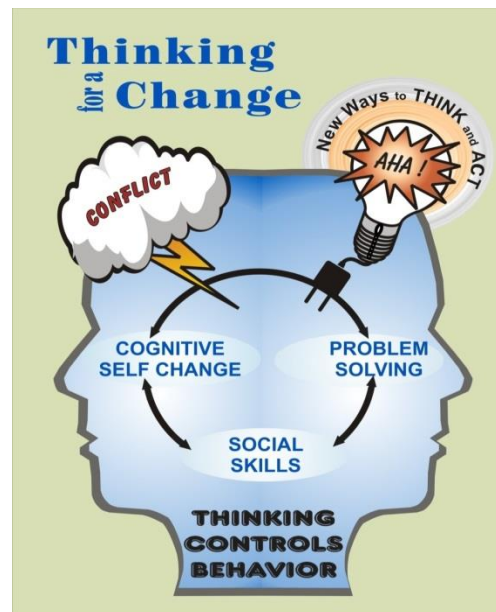


Incentive and Sanctions

- Promotes positive behavior
 - Kudos for positive actions
 - Achievement certificate
 - Events – card tournament
 - Recognition ceremony
 - Special movies
 - Games
- To impose fair and consistent responses to the behavior
 - Sanctions
 - Immediate
 - Fair
 - Sanctions correspond to violation
 - Complete Sanction

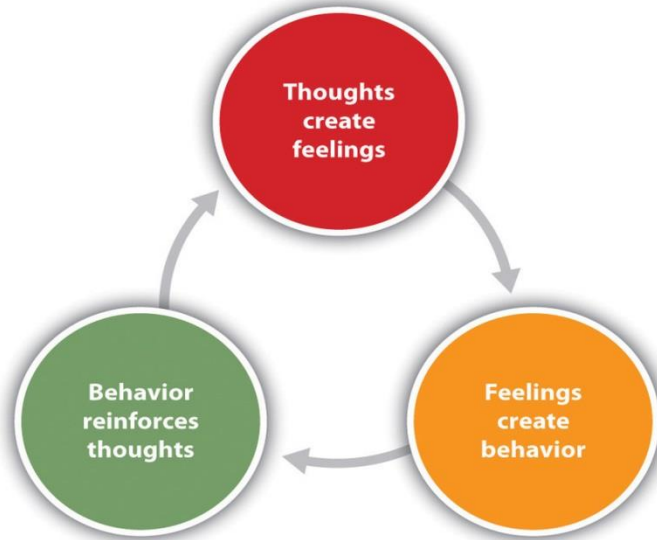
Thinking For a Change

- **Cognitive Self-Change** - Paying attention to the thoughts and feelings that go on inside of us to avoid the kinds of thoughts and feelings that lead us to trouble
- **Social Skills** – Behaviors or abilities we use in situations that involve other people
- **Problem Solving Skills** – Skills to help us make better choices



Individual Activity

- Thinking Report
 - Please take 5-10 minutes to individually complete a Thinking Report.
 - Work with a partner to review your report.
 - A couple volunteers will share with the whole group.
- Materials Needed:
 - Thinking report
 - Pen



Goal of the activity is to learn what the T4C participants are working on and how you can reinforce the main concepts.

Reentry Deputies and Facility Program Deputies



Veteran's Moving Forward Program

- 64 beds focused on veterans needs
 - 800 veterans (2013-2018)
- Peer support mentoring with ACVOW
- Collaborative partnership with Veteran Affairs, Justice Outreach, HHSA, San Diego Superior Court, District Attorney and Public Defenders Office.



Veteran's Video

- [Veteran's Moving Forward Video](#)



Break



Vocational Programs



- CIVICS
- Sewing
- Laundry
- Print Shop
- Construction Trades
- Healthcare Service Assistant Training

CIVICS Videos

- [CIVICS Video](#)



- [Seeds of Change](#)



Culinary Arts Programs

Bakery Program

- East Mesa Reentry Facility
 - 6 Month Program
 - Baking fundamentals
- Cake and Pastry Catering



Culinary Arts

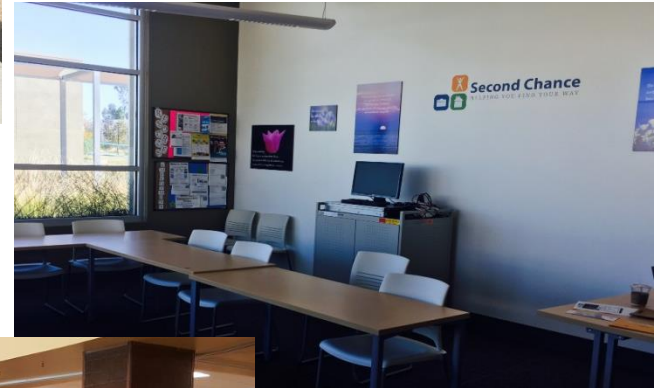
- Both Reentry Facilities
 - 6 Month Program
 - National Restaurant Association
Manage First Curriculum
 - Barista Certificate

Culinary Arts Videos

Culinary Video



Job Center



Job Center Video

Job Center Video



Jacob's Story

Education Opportunities

Grossmont Adult School

- High School Equivalency
 - Computer Literacy
 - Creative Writing

Higher Education

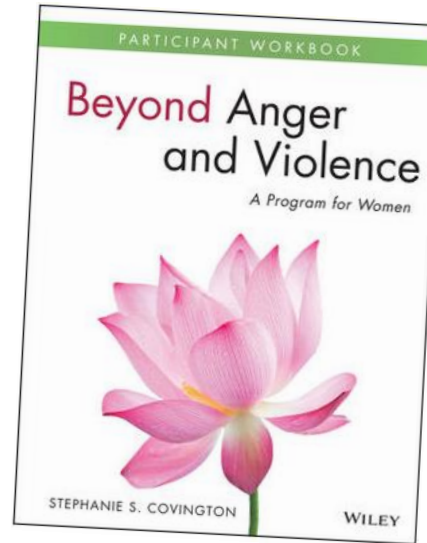


GROSSMONT-CUYAMACA
COMMUNITY COLLEGE DISTRICT



Gender Responsiveness

- Contract with Dr. Stephanie Covington
- Evidence Based and Gender Responsive Programming and Implementation
- Acknowledgement that gender makes a difference
- Understanding trauma



Gender Responsive Policy and Practice Assessment (GRPPA)

Collaboration between LCDRF and the National Institute of Corrections

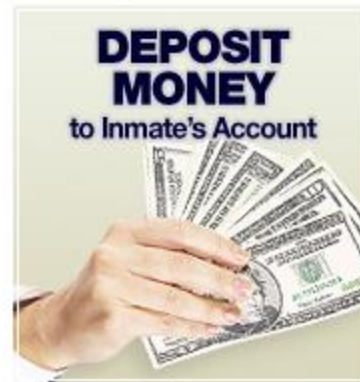
Workgroup consisted of:

- Command/Admin Staff
- Line Sworn Staff
- Counseling
- Probation Officer
- Contracted Instructors
- Justice Involved Representatives



Commissary / Central Warehouse

- Located at East Mesa- Back area
- Profits earned from commissary go into the IWF
- S-Phone order options
- Commissary is delivered weekly



Keeping Families Connected

[Reading Legacies Partnership Video](#)



Stepping Up Initiative

National Initiative focused on reducing the number of mentally ill individuals in custody.



- **PROGRESS**

- Alternative custody

- **S-SIT**

- Sheriff's Supporting Individual Transitions

- **Discharge Planning**

- Focus in pre and post case management

- **Coordinated Releases**

- Focus on medication, transportation to treatment and continuity of care

Legislative Changes and the Impacts on our System

- **AB 109**
- **Prop 47**
- **SB 10**



Group Activity

- Self Reflection

Thank you

Reentry Services Division San Diego County Sheriff's Department

