

Hallucinogens



Hallucinations

- ❖ **Affect a person's:**
 - **Perceptions**
 - **Sensations**
 - **Thinking**
 - **Self-awareness**
 - **Emotional state**



TOONHOLE.COM
Ryan Kramer

Synesthesia

Transposition of senses:

- ❖ **Seeing sounds**
- ❖ **Hearing colors**



Flash Back

Vivid recollection of hallucinogenic experience

- ❖ **Emotional**

- “Bad trip” (Panic, fear, etc.)

- ❖ **Somatic**

- Altered body sensations, tremors, weakness, dizziness, crawly, tingling feeling on the skin

- ❖ **Perceptual**

- Distortions of the five senses

Psychotomimetic

Something that mimics psychosis

- ❖ **Delusion**

- **A false belief**

- ❖ **Illusion**

- **A false perception**

Natural Hallucinogens



Peyote (Mescaline)



Psilocybin

Natural Hallucinogens



Jimson Weed



Bufo Alvarius

Natural Hallucinogens

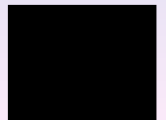


Morning Glory Seeds



Nutmeg

Natural Hallucinogens



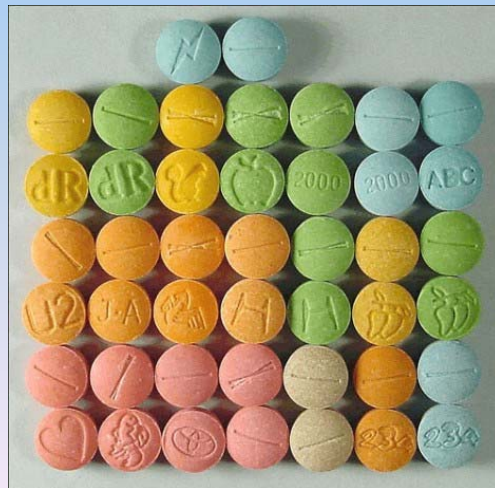
Salvia Divinorum

Synthetic Hallucinogens

❖ LSD
(Lysergic Acid Diethylamide)



❖ MDMA “Ecstasy”
(3, 4 Methylendioxyamphetamine)



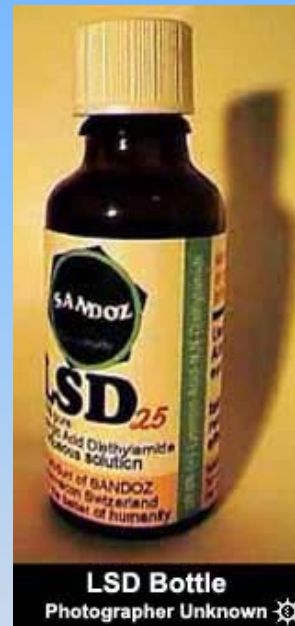
Methods of Ingestion



Orally



Insufflation



Transdermal



Smoked



Injection

General Indicators

- ❖ **Varies and influenced by personality, mood, expectations and surroundings of user**
 - **Depressed = deeper depression**
 - **Pleasant = heightened pleasure**
- ❖ **Can uncover emotional flaws**
 - **Bad “trip”**

Effects

❖ **Hallucinations**

❖ **Paranoia**

❖ **Nausea**

❖ **Perspiring**

❖ **Flashbacks**

❖ **Poor time
perception**

❖ **Body tremors**

❖ **Uncoordinated**

❖ **Disoriented**

❖ **Memory loss**

❖ **Difficulty in speech**

❖ **Synesthesia**

❖ **Dazed appearance**

Onset and Duration - Peyote

❖ 30 minutes: Onset

Nausea, elevated blood pressure, pulse and temperature and dilated pupils

❖ 60 minutes: Begin hallucinogenic effects

Visual distortions, rich colors, changing forms and moving shapes

❖ 3-4 hours: Peak effects

“Synesthesia”



Onset and Duration - Peyote

- ❖ 10 hours: Gradual decline of effects
- ❖ 12 hours: Nearly total recovery
- ❖ 24 hours: Elimination nearly completed
 - (87% of Mescaline excreted from body)



Onset and Duration - Psilocybin

❖ 1 - 30 minutes: Onset

Dizziness, giddiness, lightness or heaviness of extremities

❖ 30 - 60 minutes: Begin hallucinogenic effect

Blurred vision, sharpness of color, increased acuity hearing

❖ 60 - 90 minutes: Sensory effects intensify

Patterns and shapes develop and move, distance perception is impaired, euphoria develops

Onset and Duration - Psilocybin

❖ 90 - 100 minutes: Peak effects

Body sensations increase, subject becomes introspective

❖ 120 - 180 minutes: Effects begin to diminish



Onset and Duration - LSD

- ❖ **30 - 45 minutes: Onset**

Blood pressure, pulse and temperature rise; pupils dilate, Piloerection, nausea, dizziness and headache

- ❖ **4 - 6 hours: Peak effects**

- ❖ **7 - 9 hours: Effects diminish**

- ❖ **10 - 12 hours: Subject feels normal**



Onset and Duration – Ecstasy

❖ Several minutes - 30 minutes: Onset

Confusion, depression, anxiety and paranoia

❖ 1 - 12 hours: Duration depending on dose



Rave Goo

- ❖ **It's a combination of sweat, tears, spit, urine, feces, blood, plasma, drug particles, bile, vagina juice, semen, pimple-innards, puss, slime, smoke, debris, lint, hair, skin, cheese (and similar food particles), fingernails, wax, lymph, water, alcohol, soot, paint and unidentifiable residue that coats everything the day after a rave**

Overdose Signs

- ❖ **Long and intense bad “trip”**
 - **Suicide**
 - **Accidental death fleeing hallucinations**
 - **Perceived invulnerability**



Drug Matrix Chart

HGN	None
VGN	None
LACK OF CONVERGENCE	None
PUPIL SIZE	Dilated
REACTION TO LIGHT	Normal *
PULSE RATE	Up
BLOOD PRESSURE	Up
BODY TEMPERATURE	Up
MUSCLE TONE	Rigid

* Certain psychedelic amphetamines may cause slowing